

Subject Information

Name: Negar Rahimi

Subject ID:

Date of Birth:

Age: 14.00

Gender: F

Handedness: R

EEG ID: Startdate 22-SEP-2025 X X Sarmad

Date of Test: 09/22/25

Time of Test: 12:39:11

Technician: Nasr

Eyes Condition: Eyes Closed

Clinician:

Medication:

Comments:

Technical Information

Record Length: 05:00

Edit Length: 03:09

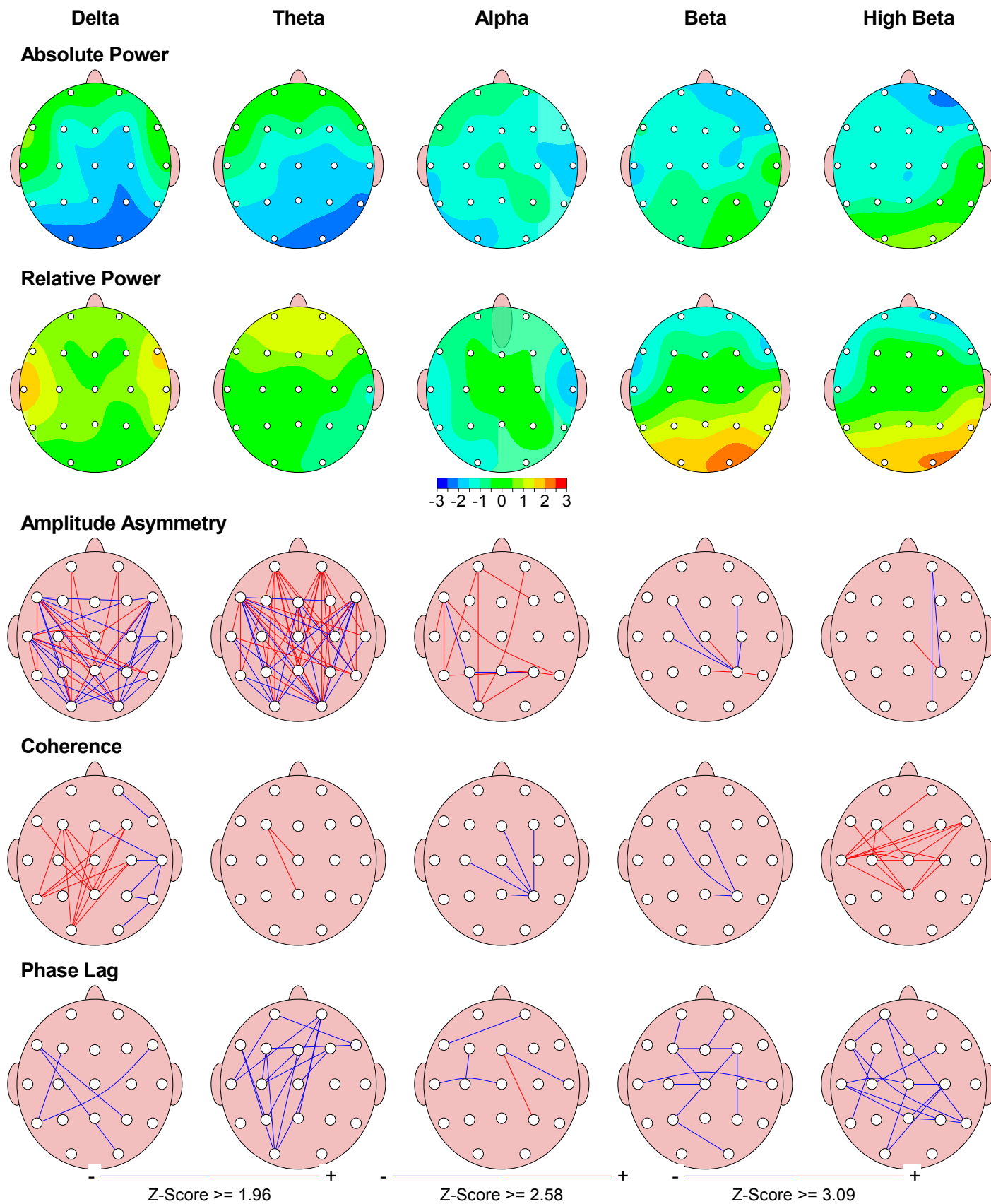
Reliability:

	Split Half	Test Retest
Average	0.98	0.99
FP1	0.99	0.98
FP2	0.99	0.99
F3	0.96	0.99
F4	0.98	1.00
C3	0.96	1.00
C4	0.98	0.99
P3	0.99	1.00
P4	1.00	0.96
O1	0.99	0.99
O2	1.00	1.00
F7	0.96	0.94
F8	0.98	0.98
T3	0.97	0.95
T4	0.96	1.00
T5	0.99	0.99
T6	1.00	1.00
Fz	0.97	0.98
Cz	0.96	0.99
Pz	0.96	0.98

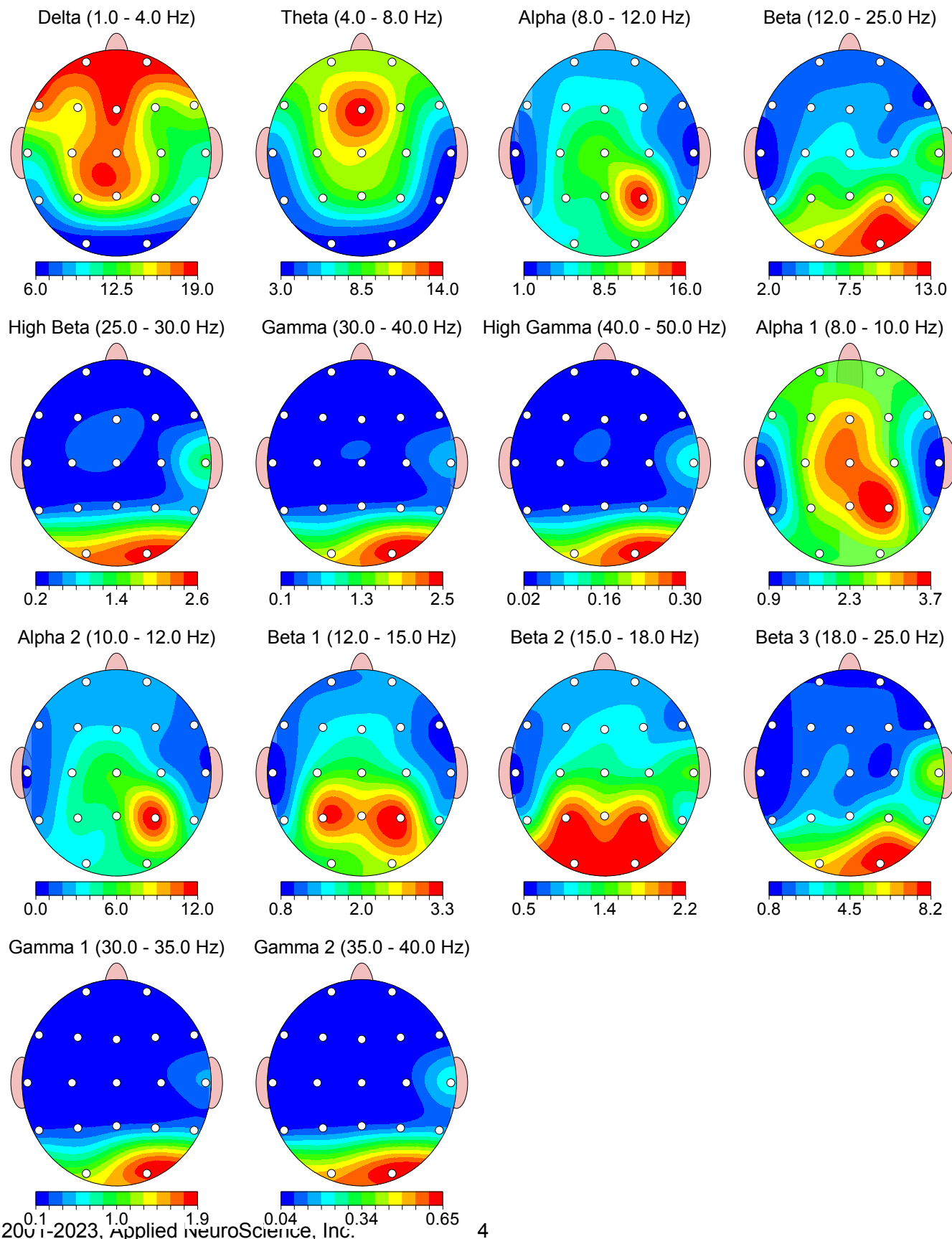
Sampling Rate: 128

Collection Hardware: Unknown

Z Scored FFT Summary Information

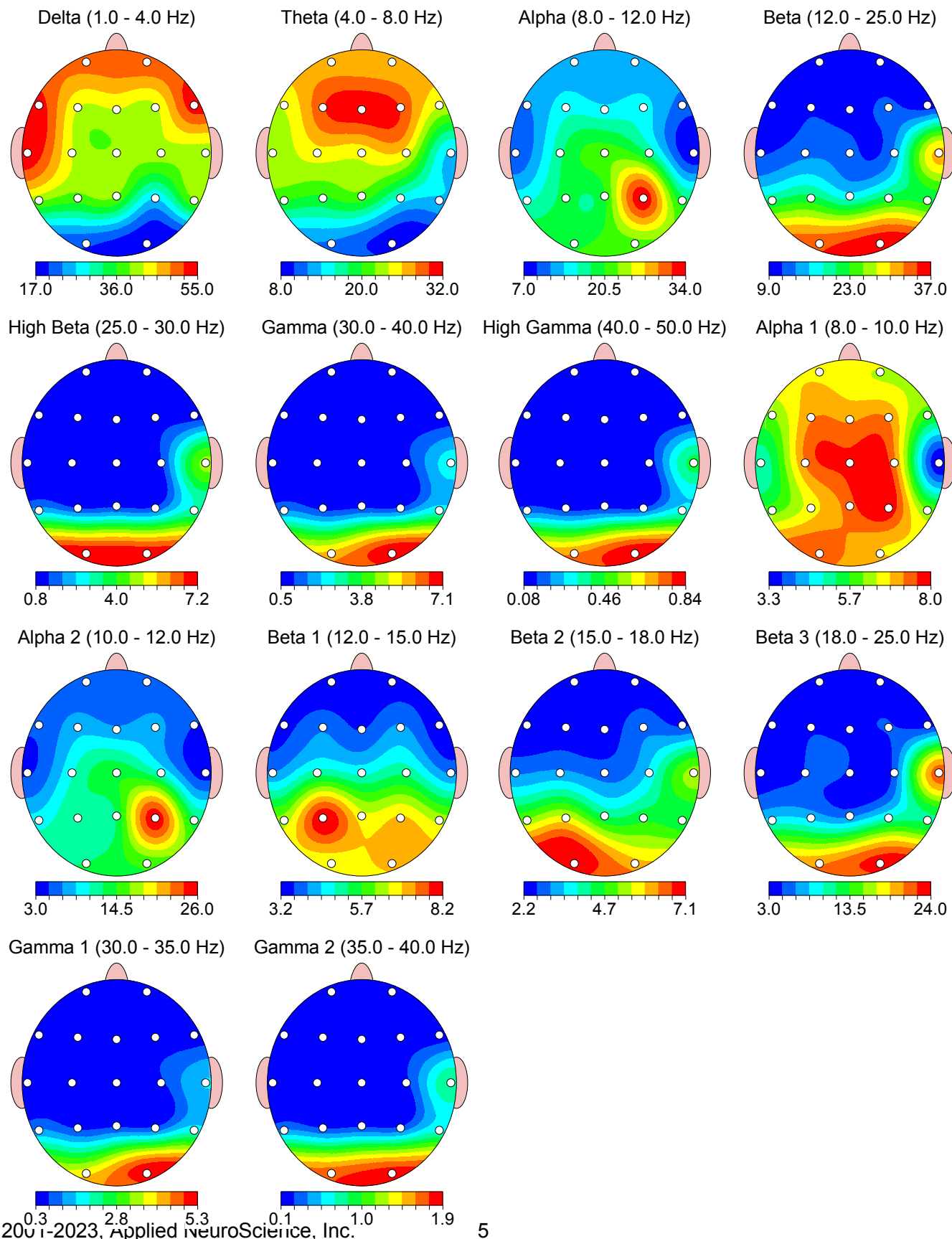


FFT Absolute Power (uV Sq)

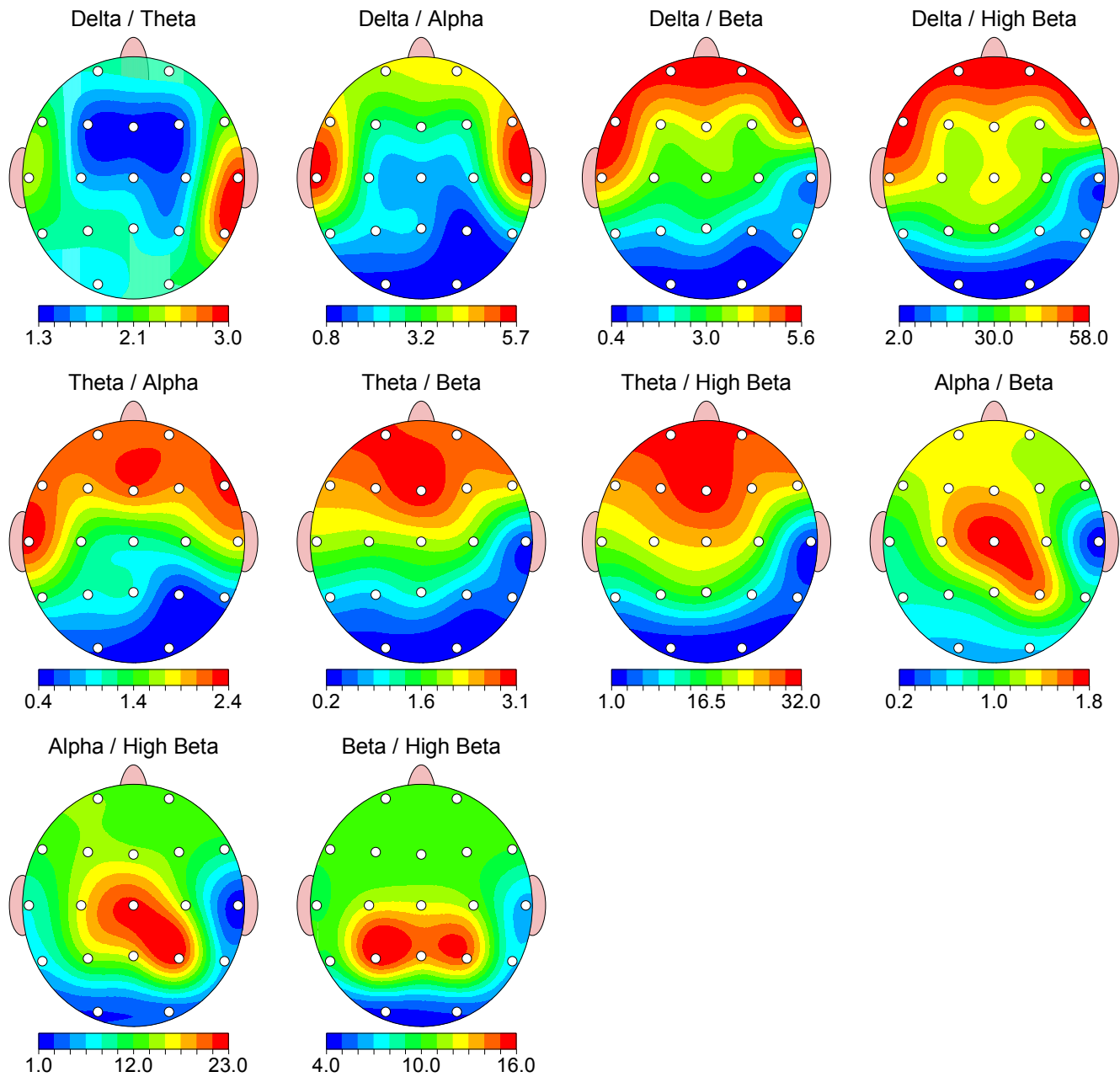


FFT Relative Power (%)

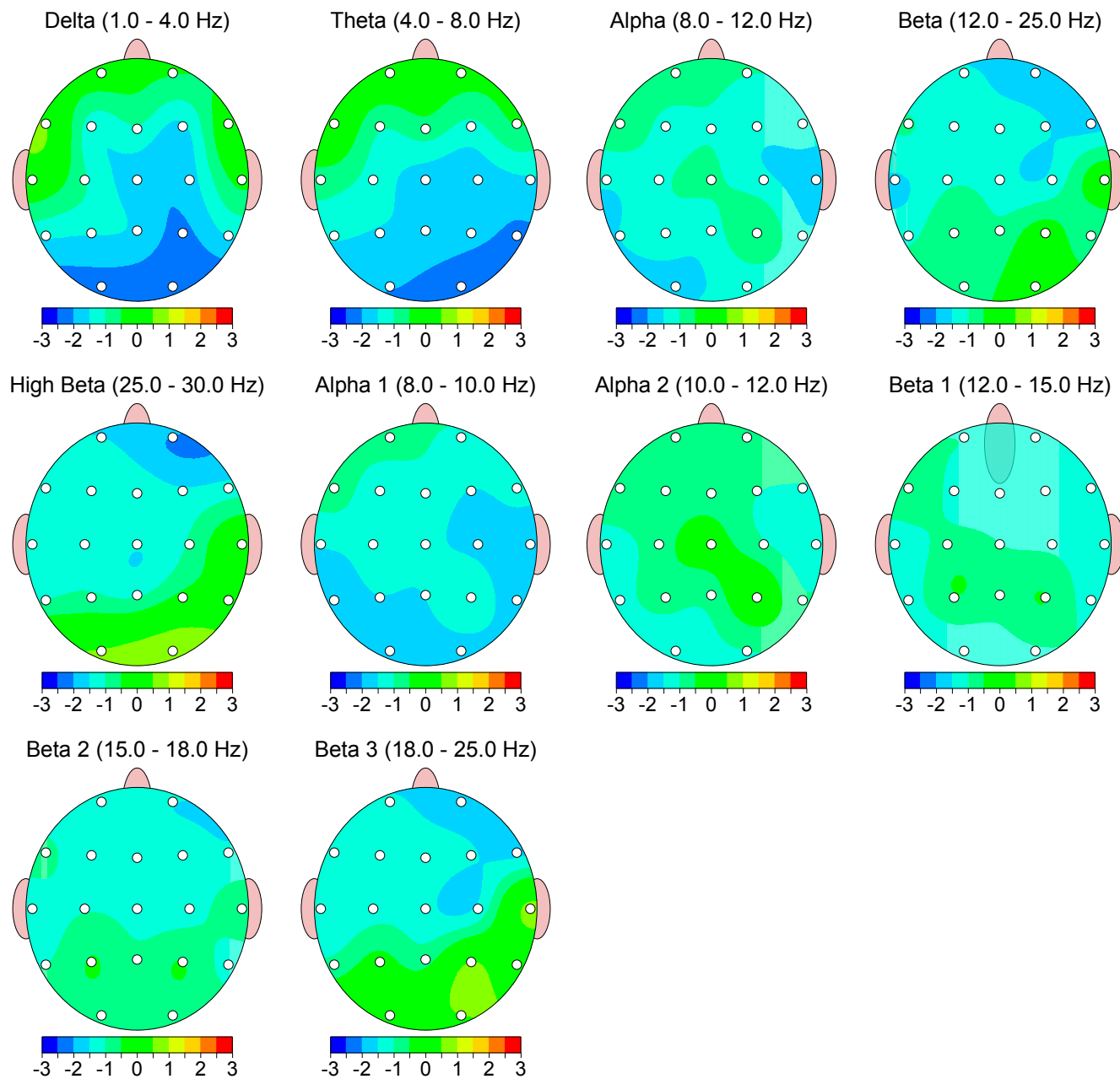
Warning: Absolute power must be consulted to interpret relative power.



FFT Power Ratio

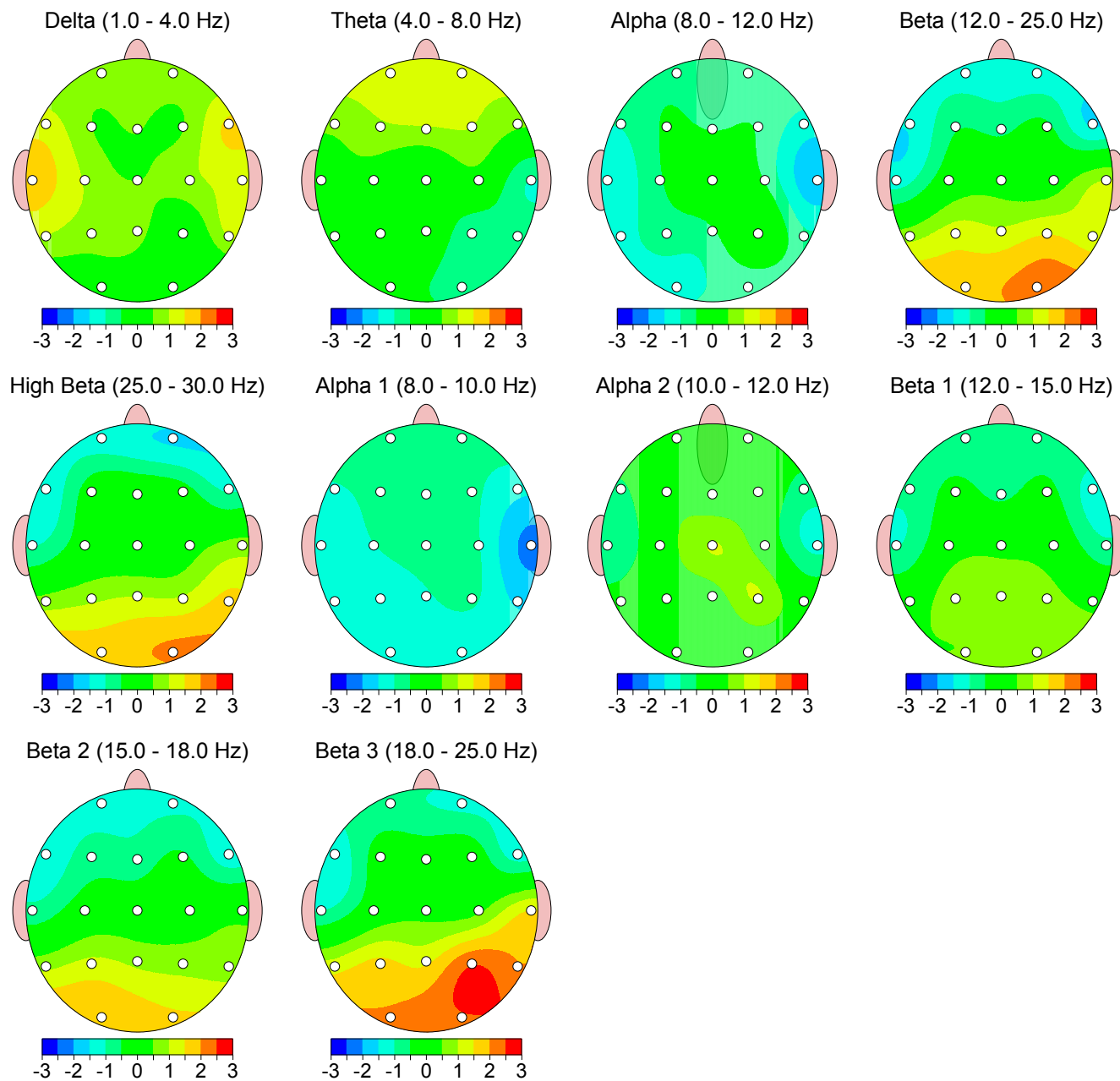


Z Scored FFT Absolute Power

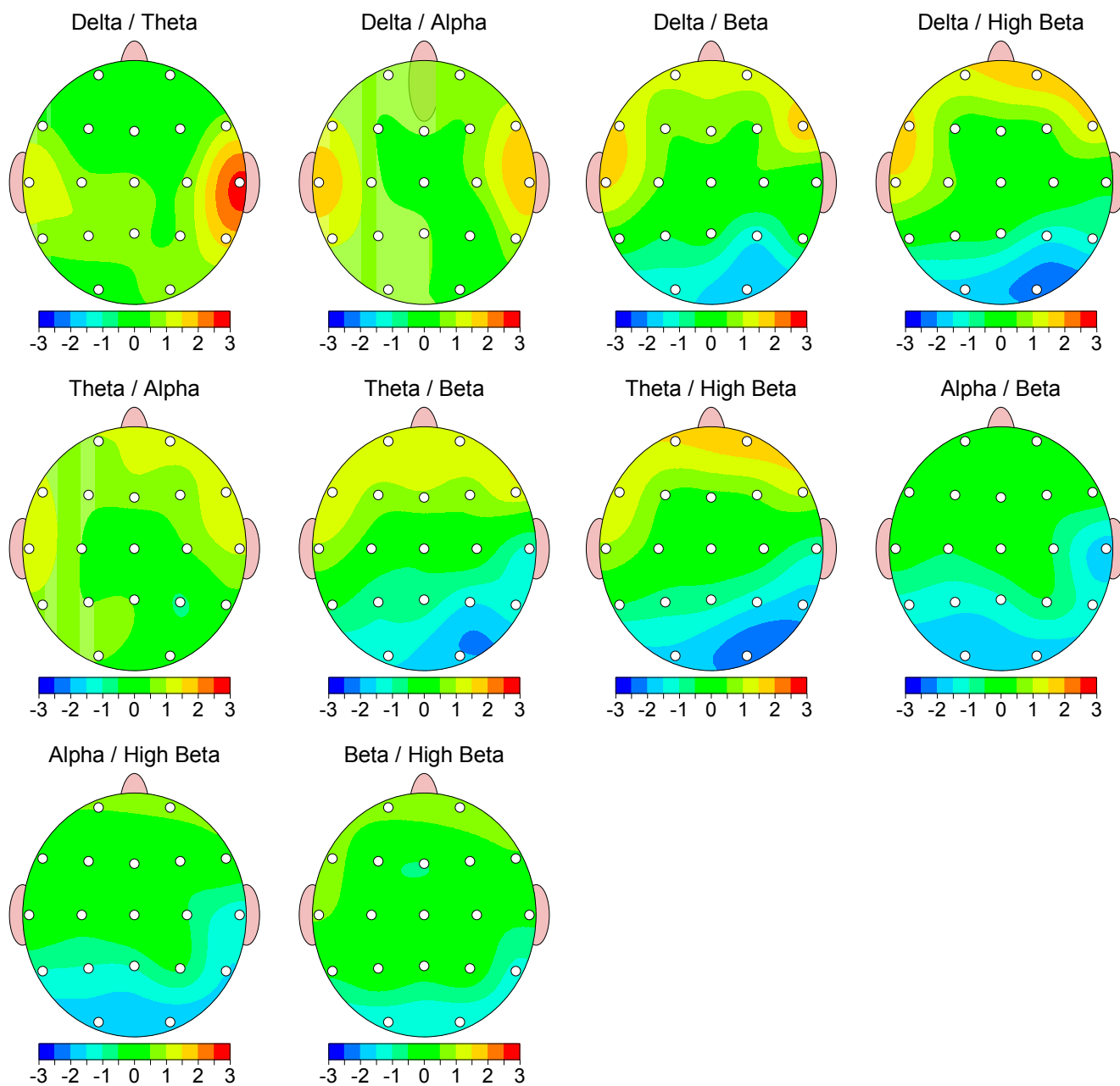


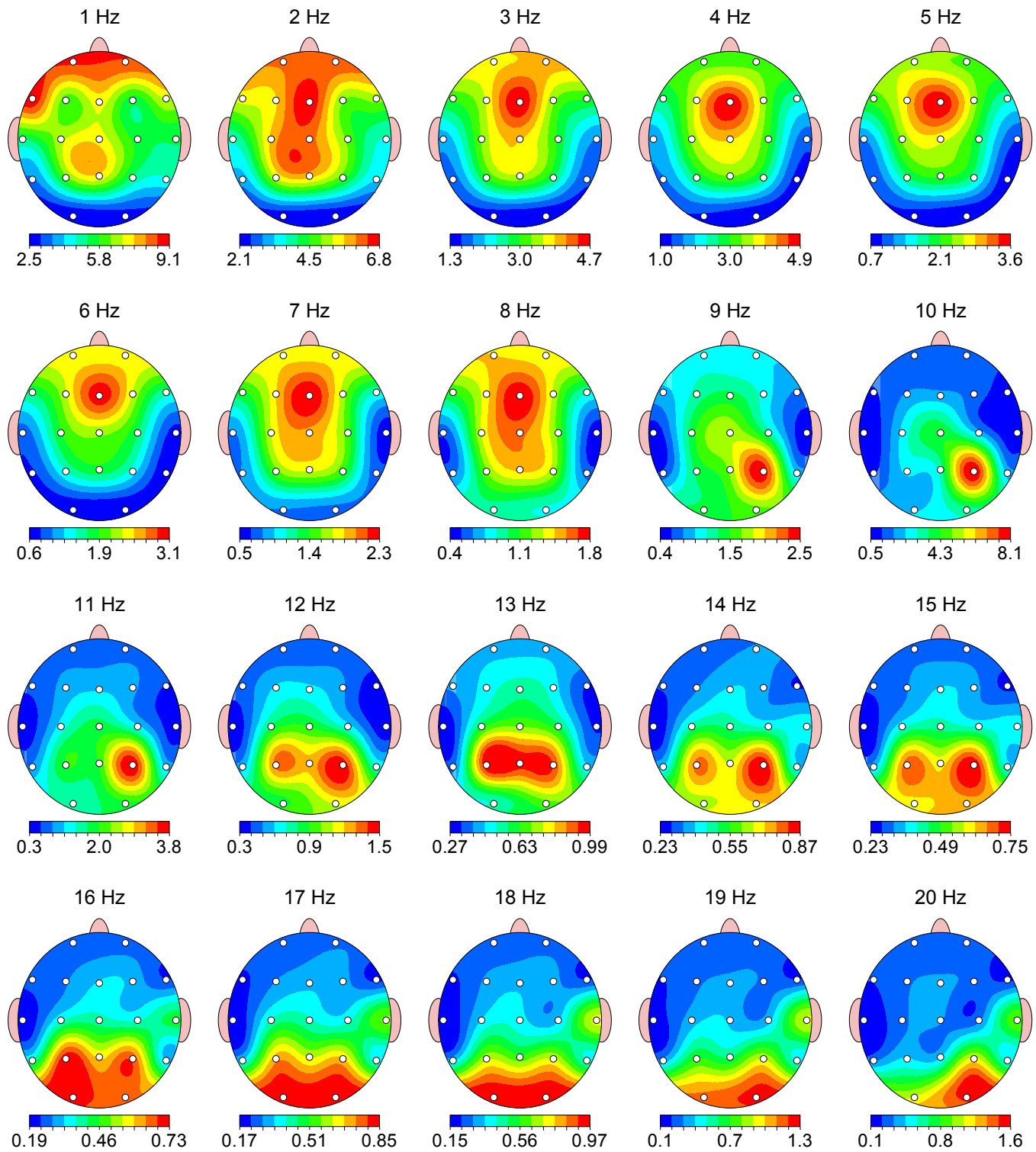
Z Scored FFT Relative Power

Warning: Absolute power must be consulted to interpret relative power.

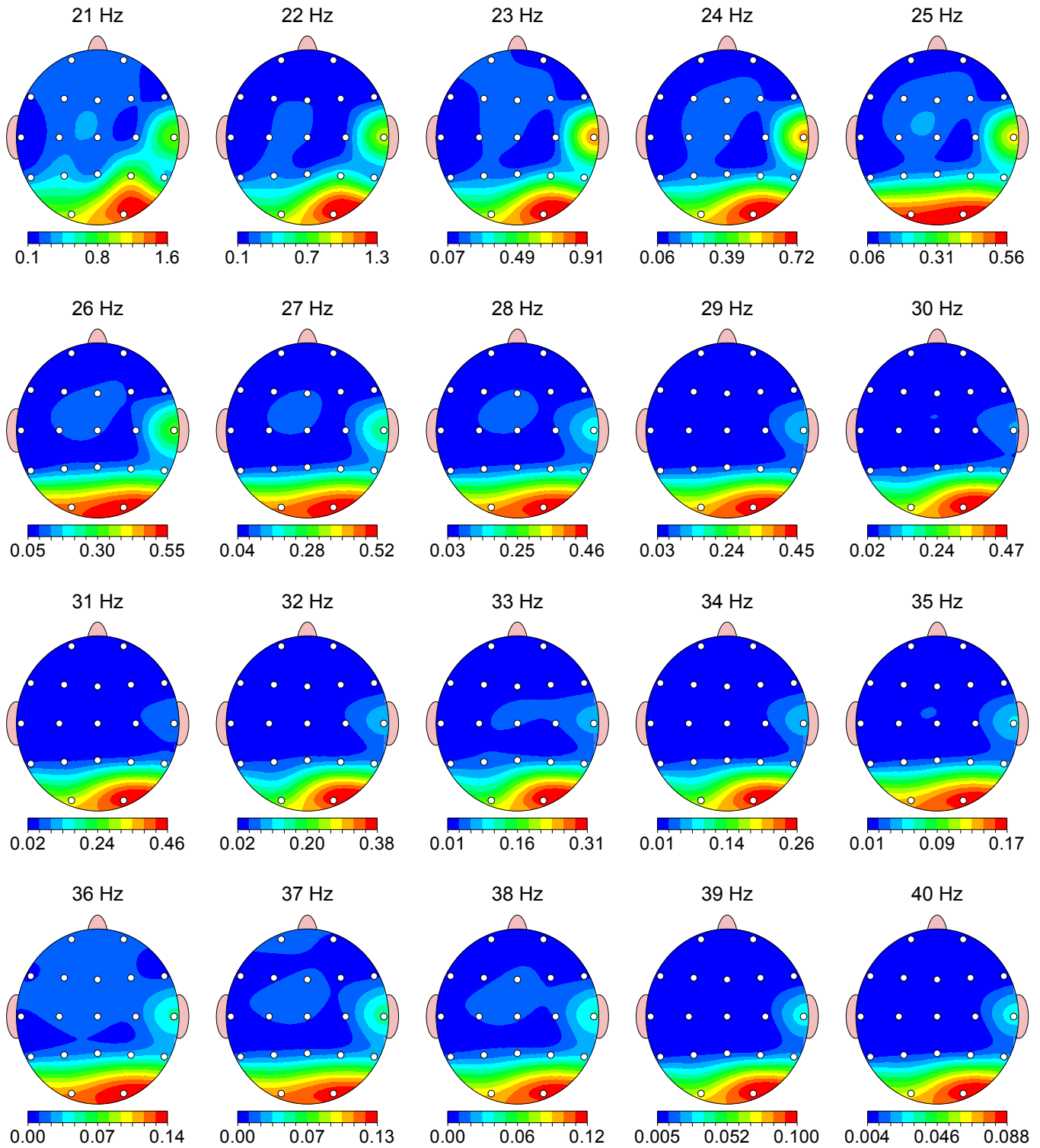


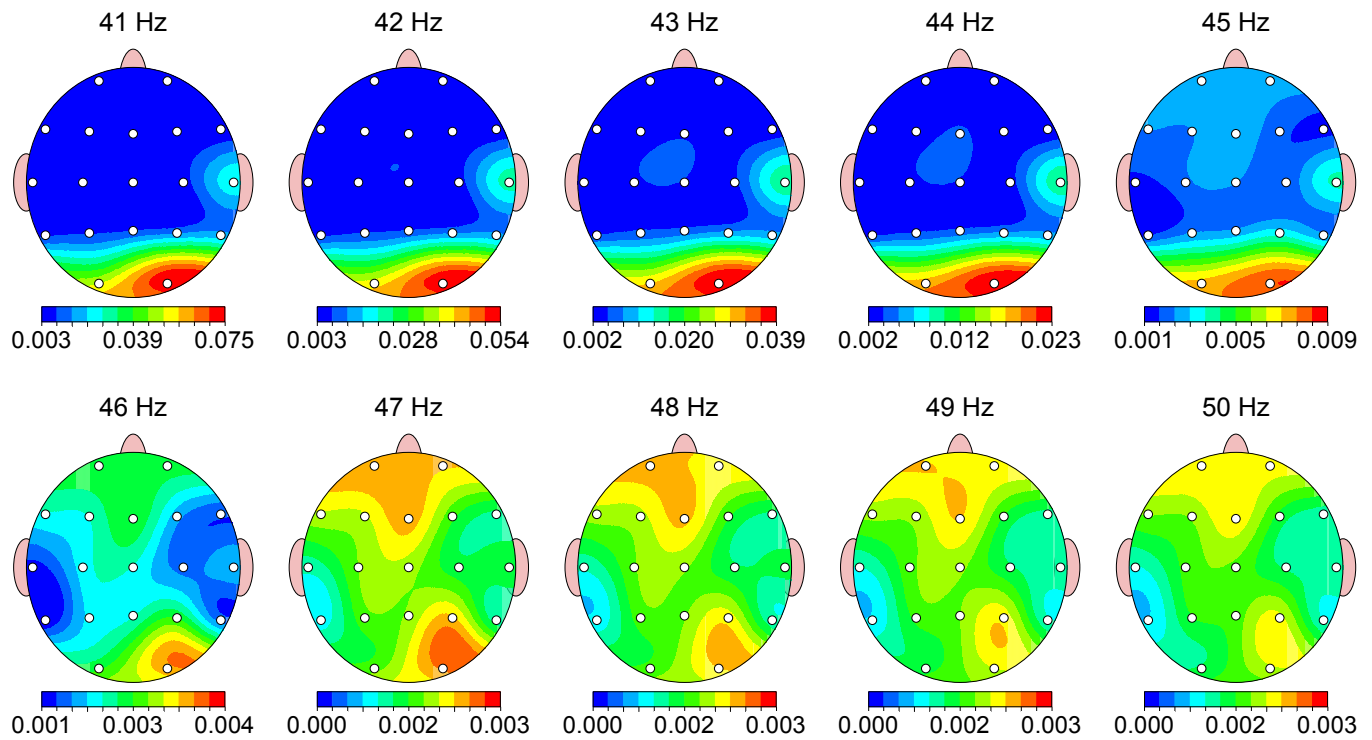
Z Scored FFT Power Ratio



FFT Absolute Power ($\mu\text{V Sq}$)

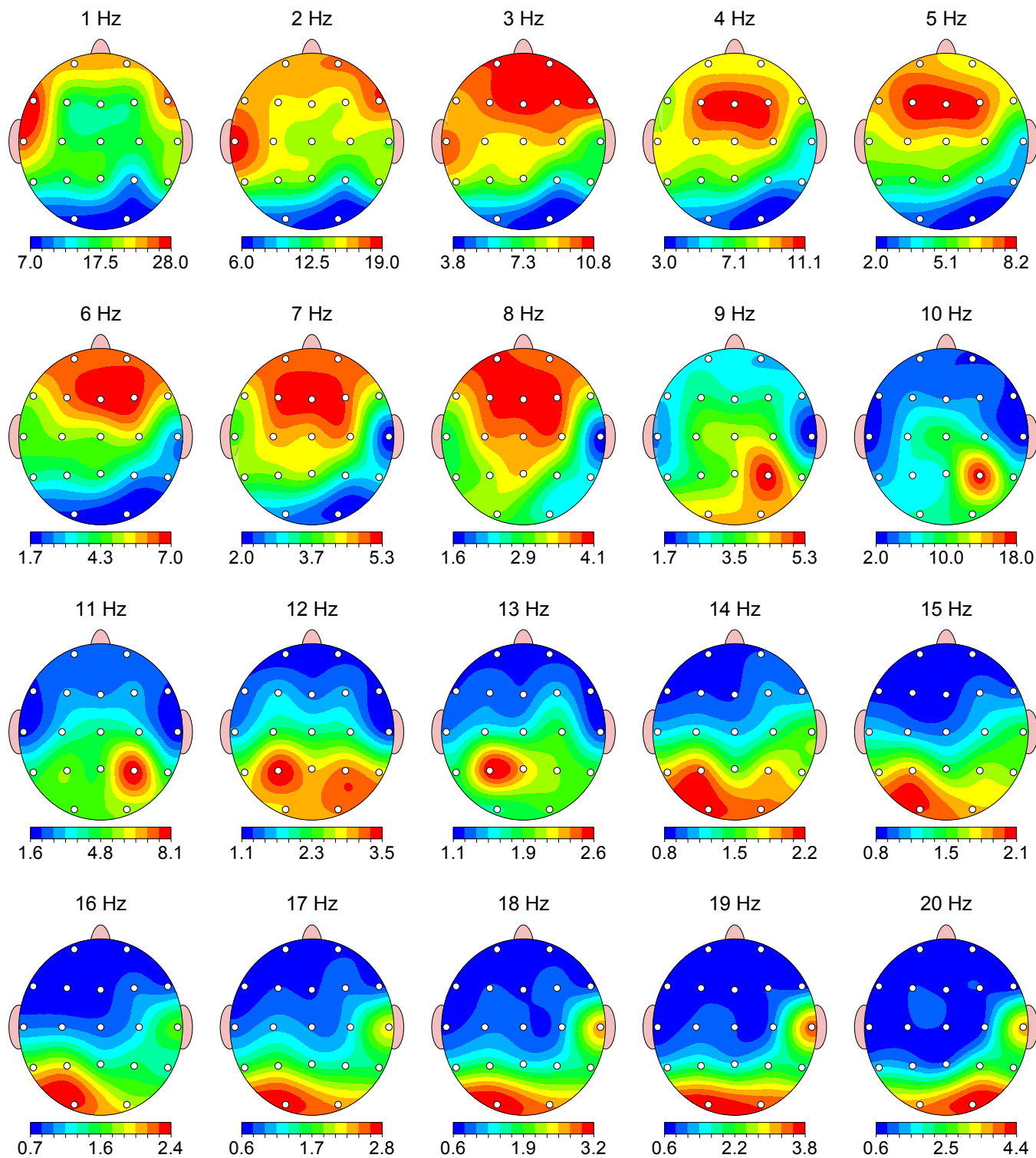
FFT Absolute Power ($\mu\text{V Sq}$)



FFT Absolute Power ($\mu\text{V Sq}$)

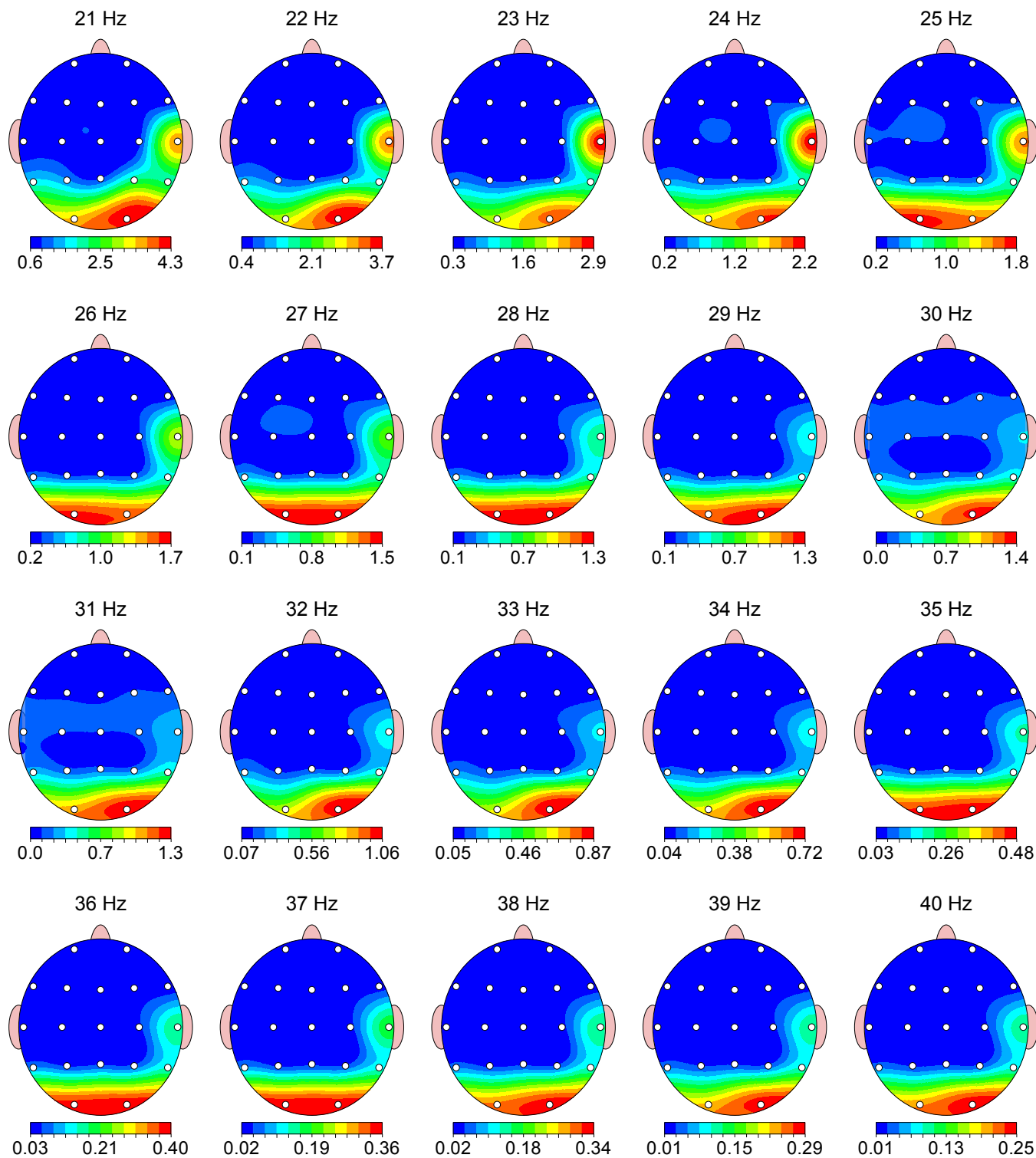
FFT Relative Power (%)

Warning: Absolute power must be consulted to interpret relative power.



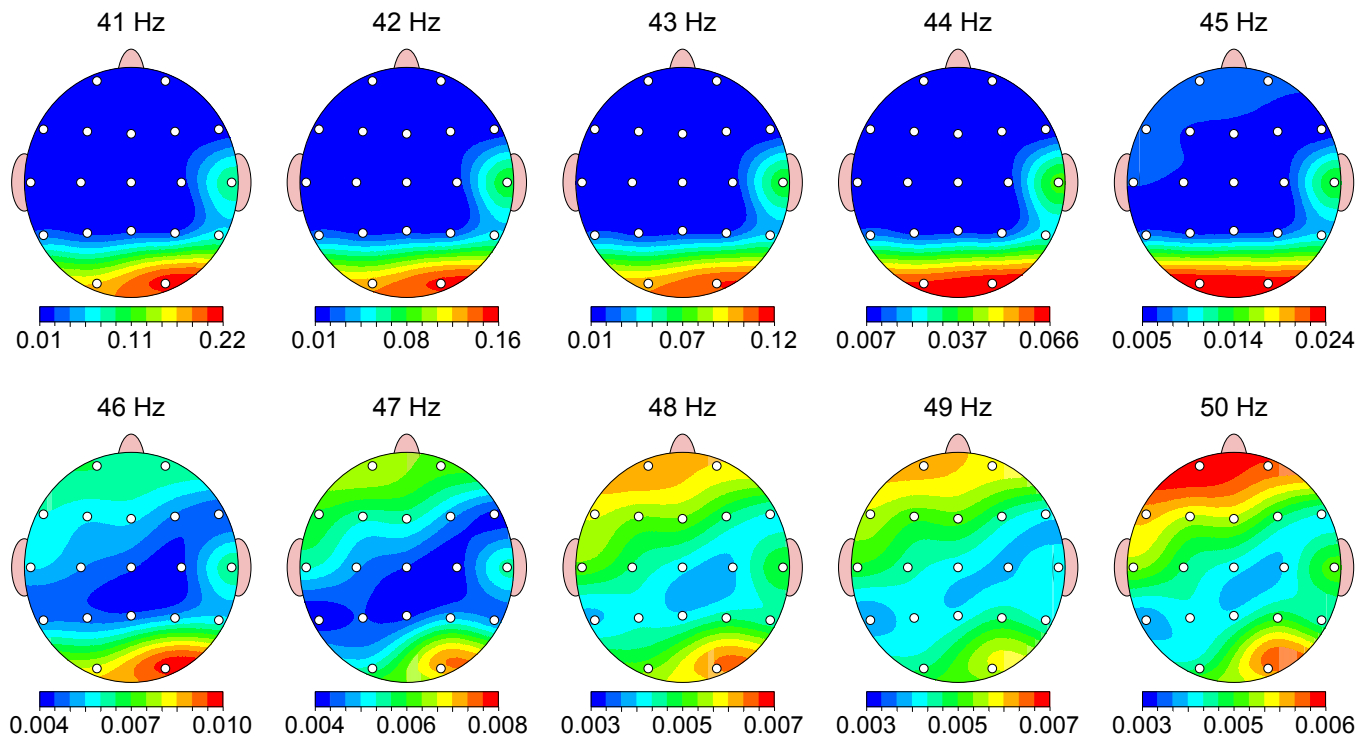
FFT Relative Power (%)

Warning: Absolute power must be consulted to interpret relative power.

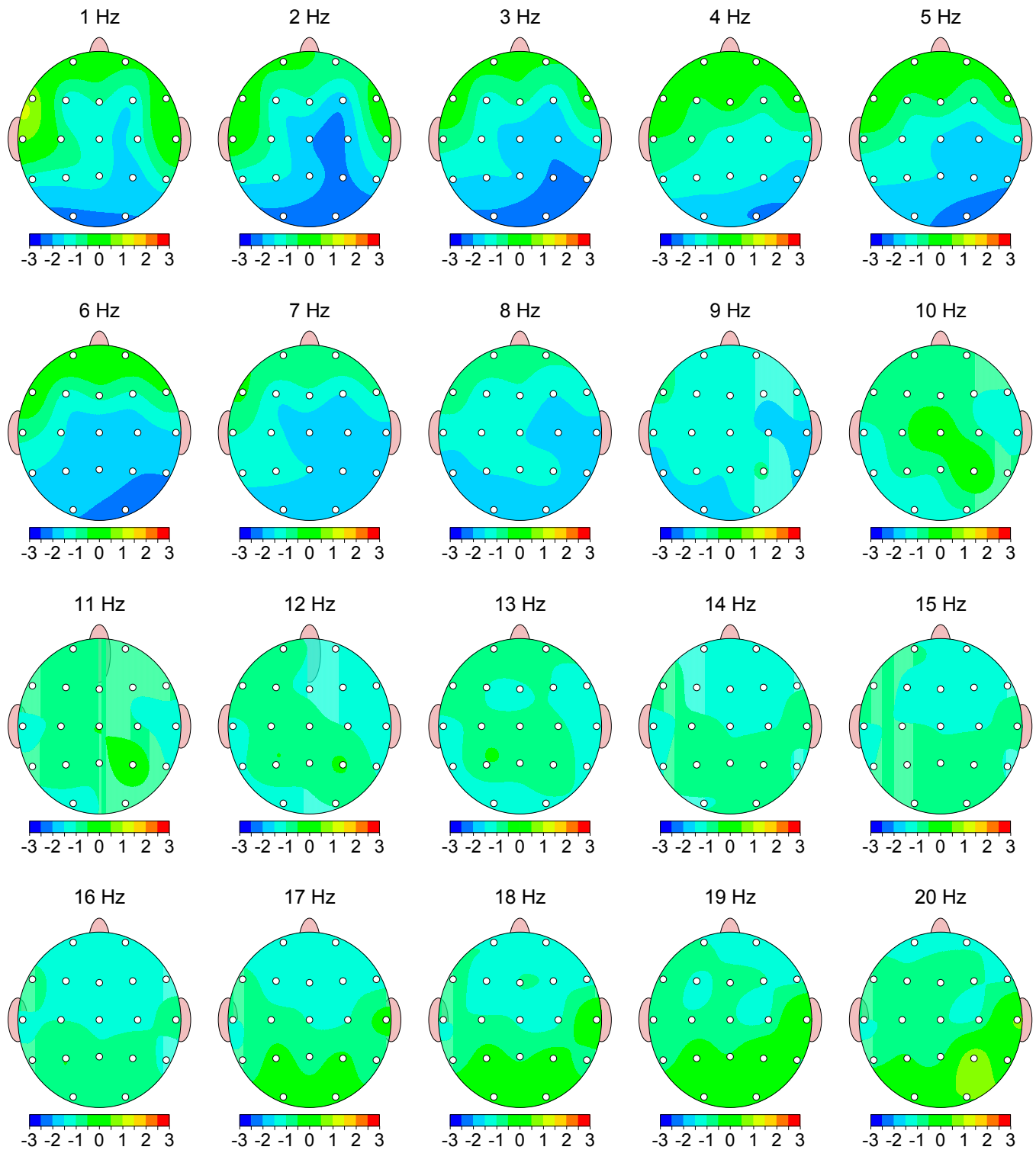


FFT Relative Power (%)

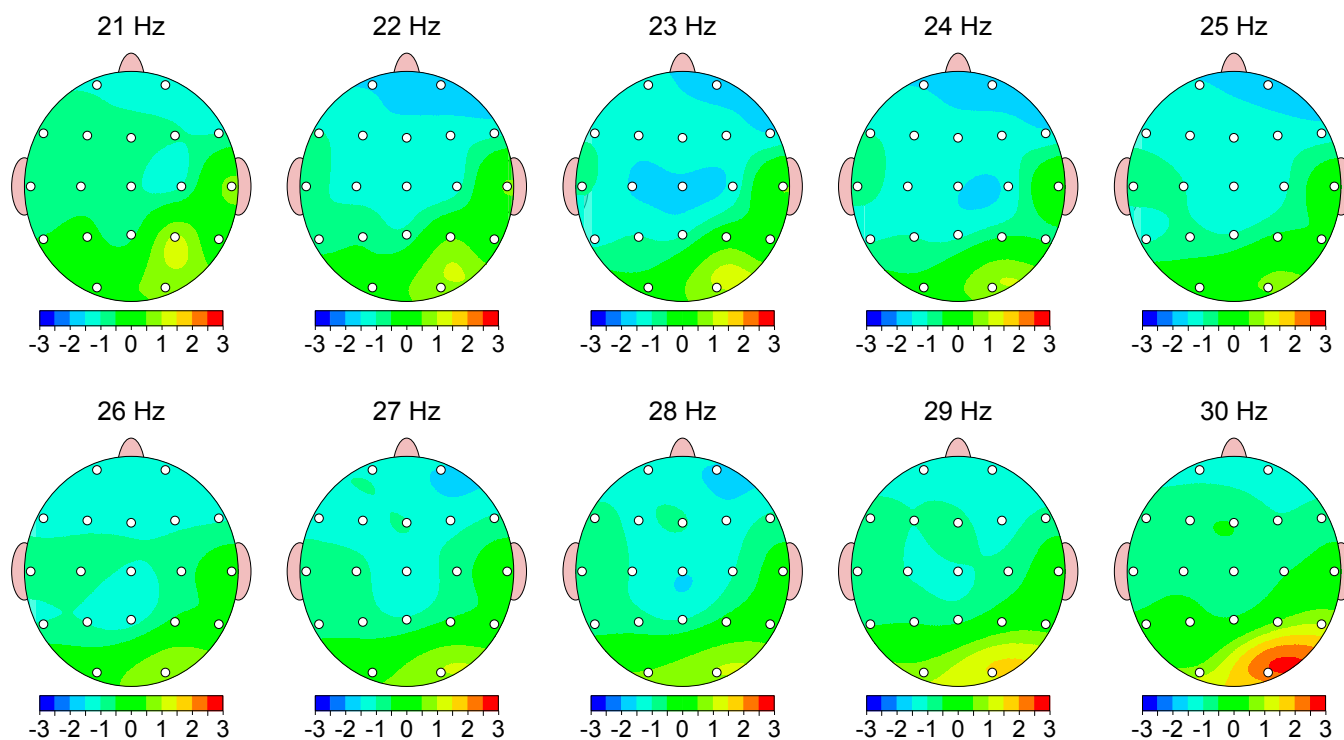
Warning: Absolute power must be consulted to interpret relative power.



Z Scored FFT Absolute Power

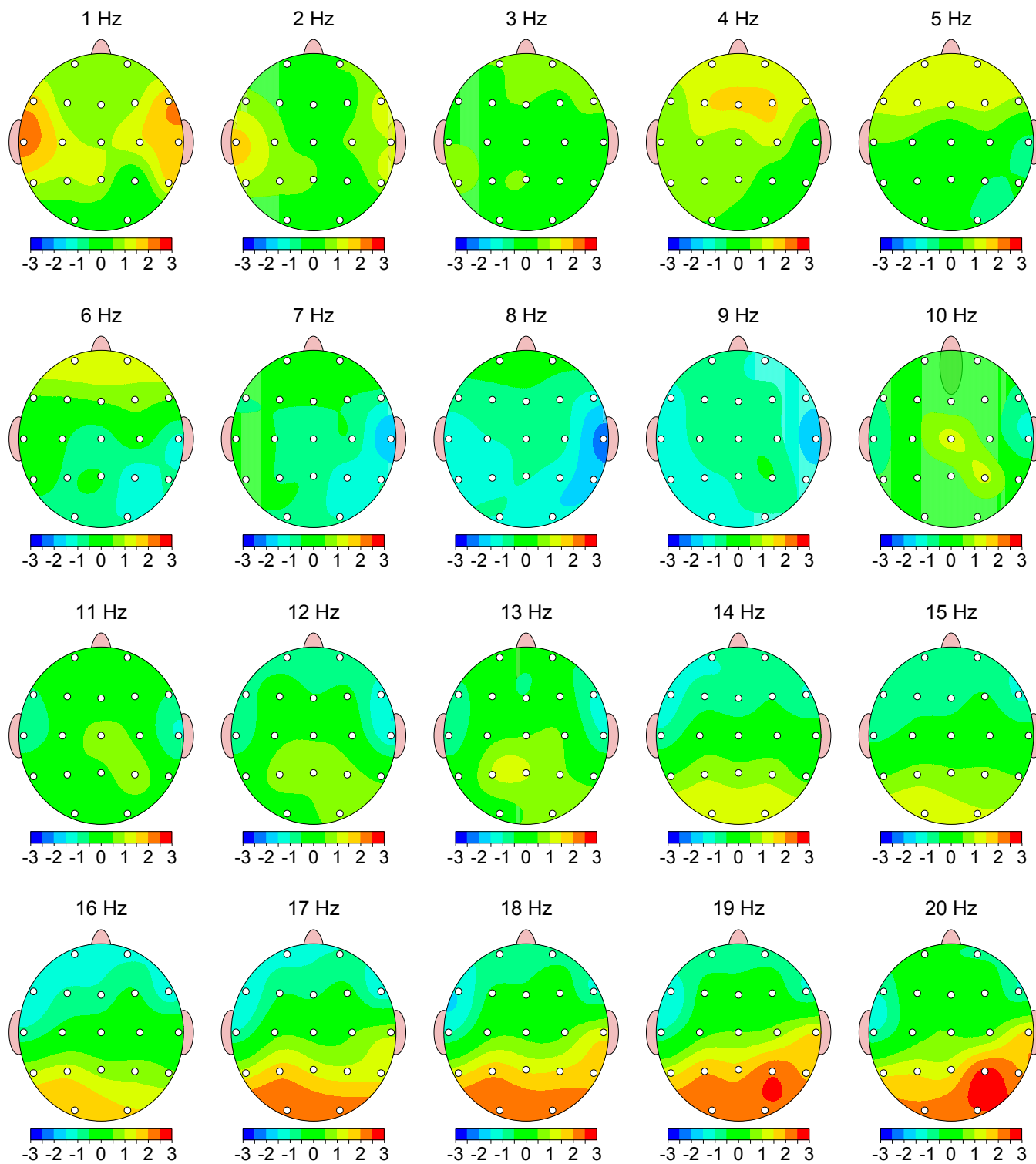


Z Scored FFT Absolute Power



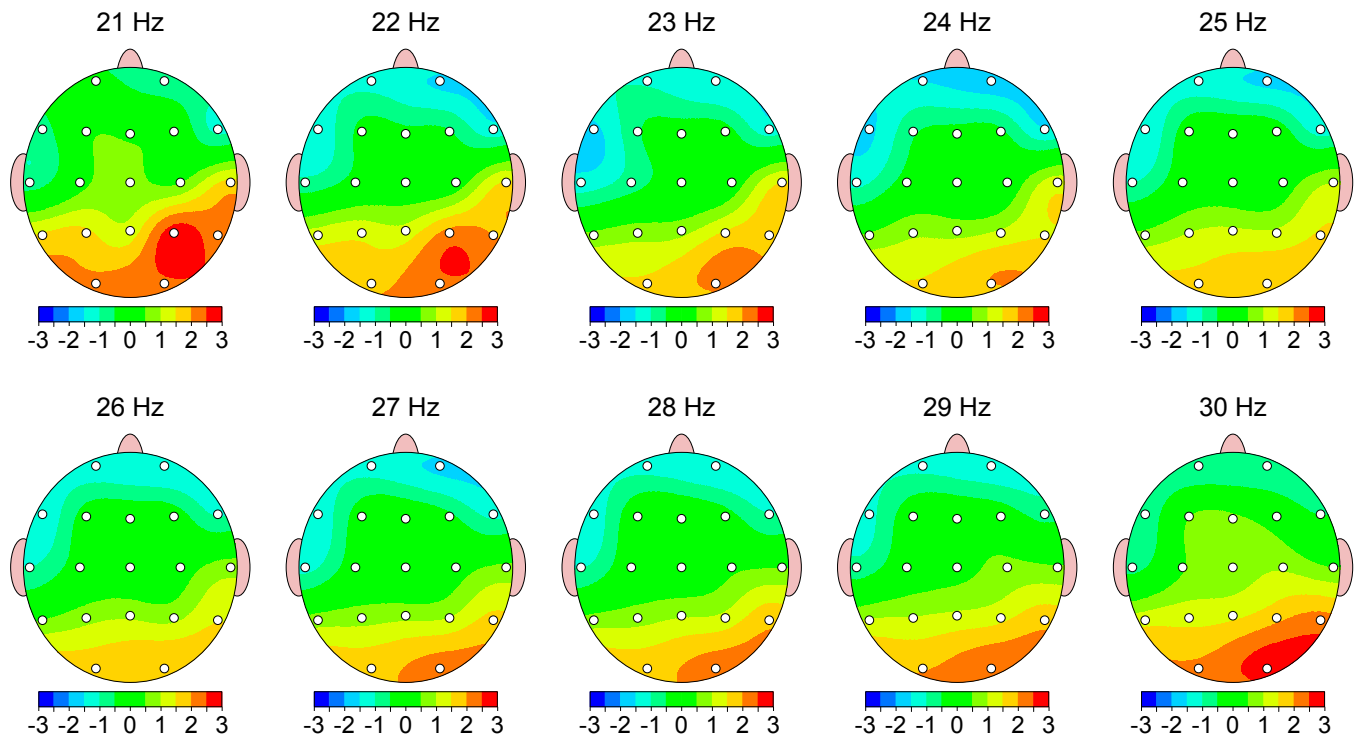
Z Scored FFT Relative Power

Warning: Absolute power must be consulted to interpret relative power.



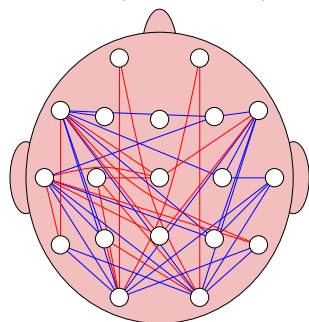
Z Scored FFT Relative Power

Warning: Absolute power must be consulted to interpret relative power.

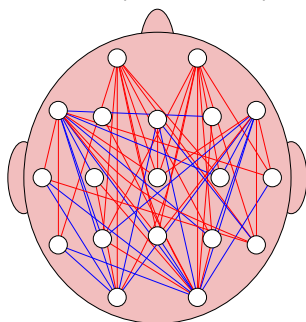


Z Scored FFT Amplitude Asymmetry

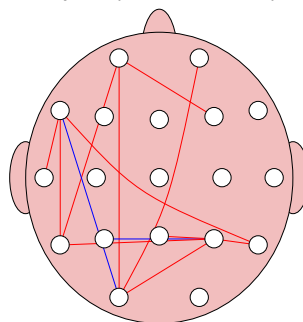
Delta (1.0 - 4.0 Hz)



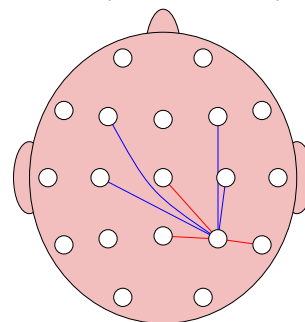
Theta (4.0 - 8.0 Hz)



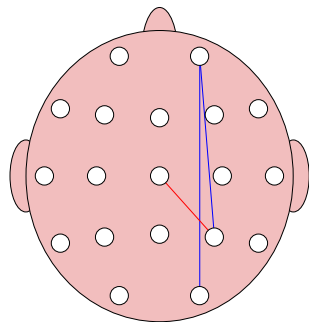
Alpha (8.0 - 12.0 Hz)



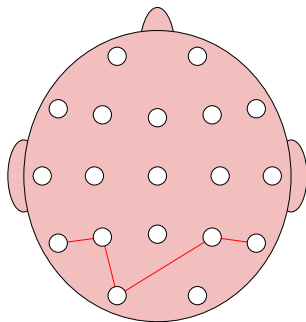
Beta (12.0 - 25.0 Hz)



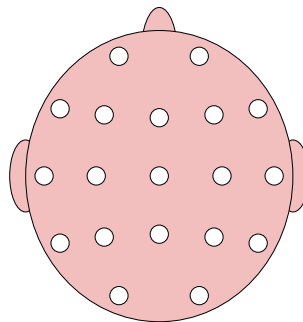
High Beta (25.0 - 30.0 Hz)



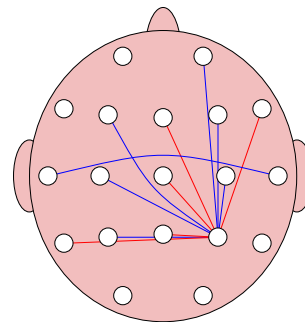
Beta 1 (12.0 - 15.0 Hz)



Beta 2 (15.0 - 18.0 Hz)



Beta 3 (18.0 - 25.0 Hz)

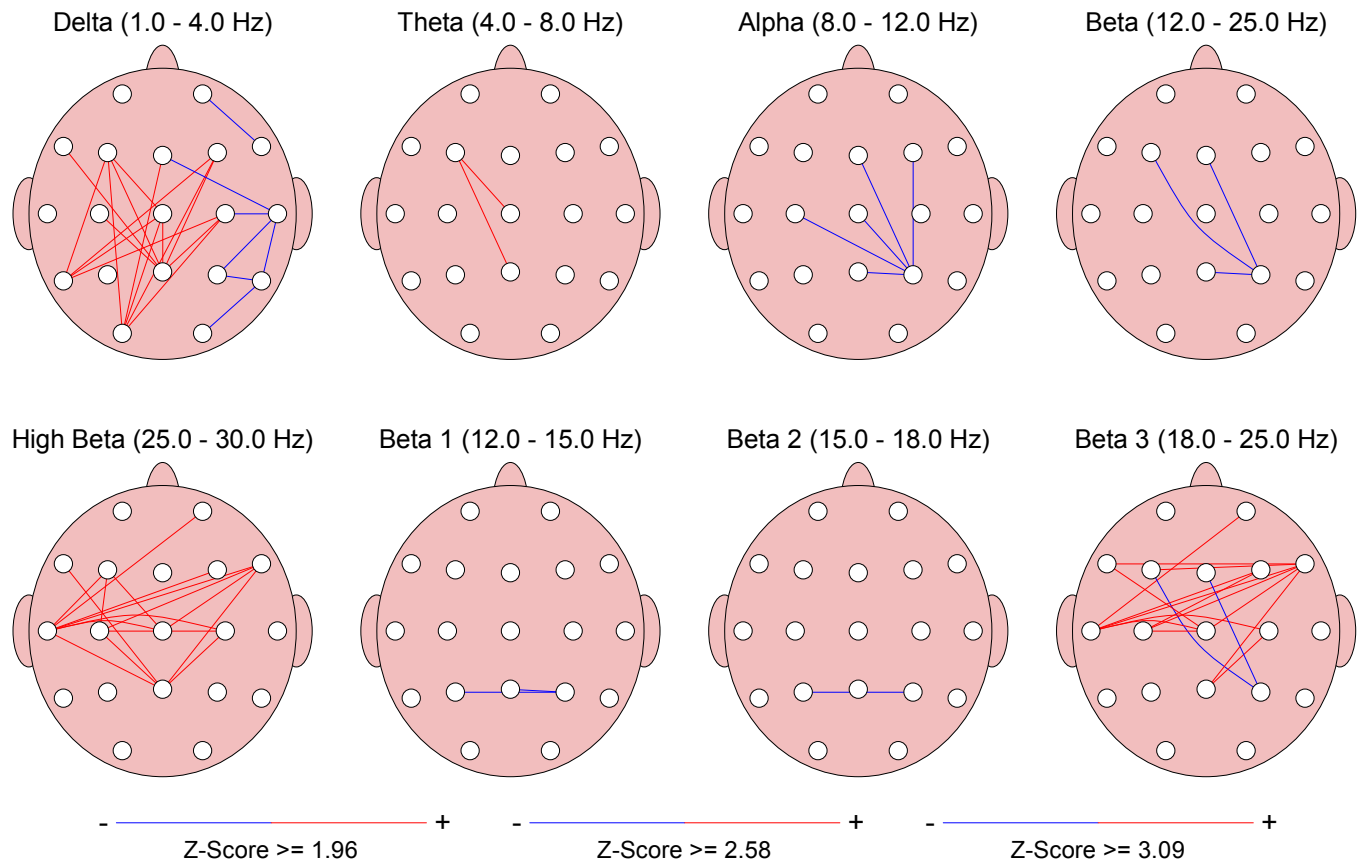


- ———— +
Z-Score ≥ 1.96

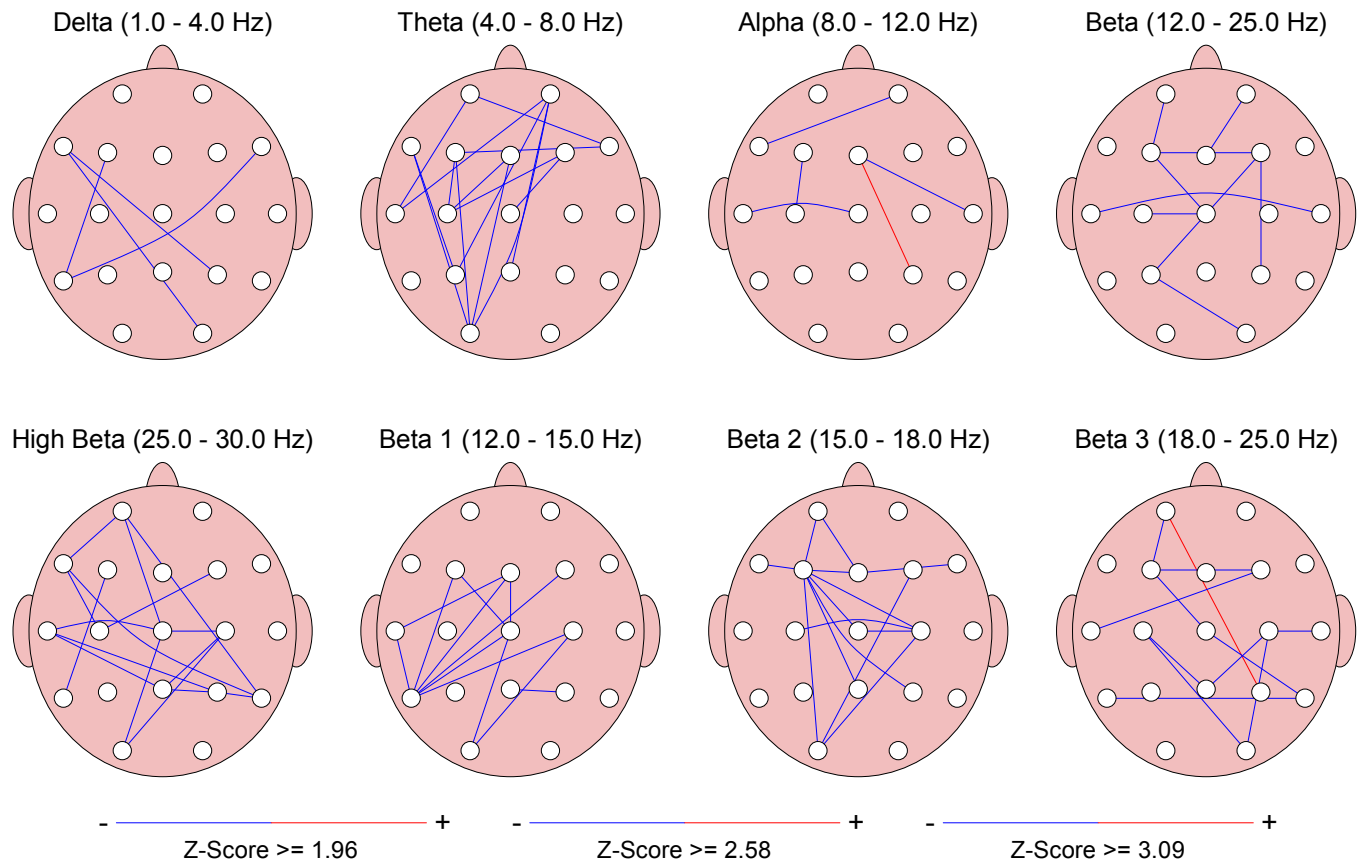
- ———— +
Z-Score ≥ 2.58

- ———— +
Z-Score ≥ 3.09

Z Scored FFT Coherence



Z Scored FFT Phase Lag



FFT Absolute Power (uV Sq)

Intrahemispheric: LEFT

	DELTA	THETA	ALPHA	BETA	HIGH	BETA 1	BETA 2	BETA 3
FP1 - LE	18.51	9.89	4.58	3.43	0.33	1.20	0.82	1.41
F3 - LE	15.29	10.69	5.41	3.96	0.38	1.43	0.88	1.65
C3 - LE	15.74	9.33	6.57	4.82	0.40	1.88	1.16	1.78
P3 - LE	14.34	7.45	7.11	8.23	0.52	3.09	2.13	3.01
O1 - LE	6.24	3.51	6.09	10.33	2.18	2.04	2.15	6.14
F7 - LE	17.51	7.98	3.75	3.14	0.31	1.15	0.75	1.24
T3 - LE	11.01	4.62	1.96	2.25	0.23	0.82	0.60	0.83
T5 - LE	8.35	4.22	3.27	4.28	0.45	1.33	1.08	1.88

Intrahemispheric: RIGHT

	DELTA	THETA	ALPHA	BETA	HIGH	BETA 1	BETA 2	BETA 3
FP2 - LE	18.69	9.71	4.39	3.46	0.33	1.24	0.84	1.38
F4 - LE	13.70	9.78	4.78	3.87	0.37	1.34	0.95	1.58
C4 - LE	13.25	8.10	5.78	4.58	0.41	1.67	1.14	1.77
P4 - LE	12.48	7.10	15.52	10.18	0.70	3.27	2.11	4.81
O2 - LE	6.30	3.16	7.72	12.75	2.51	2.48	2.13	8.14
F8 - LE	15.00	6.76	2.99	2.81	0.28	0.94	0.72	1.16
T4 - LE	10.83	3.67	1.93	8.21	1.25	1.06	1.39	5.76
T6 - LE	9.52	3.36	4.74	5.49	0.76	1.57	1.08	2.84

Intrahemispheric: CENTER

	DELTA	THETA	ALPHA	BETA	HIGH	BETA 1	BETA 2	BETA 3
Fz - LE	18.50	13.72	6.30	4.46	0.43	1.57	1.02	1.86
Cz - LE	17.26	10.74	9.40	5.24	0.43	2.07	1.23	1.95
Pz - LE	16.61	8.98	8.61	7.29	0.52	2.85	1.80	2.64

Z Scored FFT Absolute Power

Intrahemispheric: LEFT

	DELTA	THETA	ALPHA	BETA	HIGH	BETA 1	BETA 2	BETA 3
FP1 - LE	-0.27	-0.10	-0.84	-1.44	-1.49	-1.01	-1.28	-1.42
F3 - LE	-1.26	-0.92	-1.11	-1.43	-1.17	-1.11	-1.38	-1.36
C3 - LE	-0.95	-1.21	-1.09	-1.12	-1.11	-0.84	-1.05	-1.25
P3 - LE	-1.47	-1.54	-1.25	-0.51	-0.89	-0.54	-0.47	-0.31
O1 - LE	-2.20	-1.97	-1.57	-0.64	0.52	-1.30	-0.70	0.15
F7 - LE	0.49	0.10	-0.67	-0.96	-1.32	-0.67	-0.90	-1.04
T3 - LE	0.06	-0.72	-1.43	-1.56	-1.05	-1.30	-1.24	-1.37
T5 - LE	-1.41	-1.43	-1.50	-1.13	-0.98	-1.20	-1.02	-0.82

Intrahemispheric: RIGHT

	DELTA	THETA	ALPHA	BETA	HIGH	BETA 1	BETA 2	BETA 3
FP2 - LE	-0.47	-0.27	-0.99	-1.70	-2.02	-1.14	-1.49	-1.75
F4 - LE	-1.58	-1.14	-1.35	-1.47	-1.44	-1.21	-1.32	-1.45
C4 - LE	-1.73	-1.78	-1.38	-1.36	-0.93	-1.11	-1.24	-1.39
P4 - LE	-2.11	-1.81	-0.52	-0.21	-0.32	-0.50	-0.50	0.51
O2 - LE	-2.31	-2.28	-1.40	-0.33	0.79	-1.06	-0.72	0.49
F8 - LE	-0.05	-0.48	-1.28	-1.71	-1.30	-1.28	-1.42	-1.64
T4 - LE	-0.35	-1.57	-1.68	-0.12	0.01	-1.28	-0.72	0.64
T6 - LE	-1.49	-2.09	-1.42	-0.95	-0.24	-1.22	-1.18	-0.28

Intrahemispheric: CENTER

	DELTA	THETA	ALPHA	BETA	HIGH	BETA 1	BETA 2	BETA 3
Fz - LE	-1.06	-0.72	-1.05	-1.32	-1.17	-1.15	-1.27	-1.21
Cz - LE	-1.79	-1.74	-0.92	-1.28	-1.46	-0.99	-1.22	-1.35
Pz - LE	-1.60	-1.57	-1.23	-0.85	-1.06	-0.79	-0.85	-0.68

FFT Relative Power (%)

Intrahemispheric: LEFT

	DELTA	THETA	ALPHA	BETA	HIGH	BETA 1	BETA 2	BETA 3
FP1 - LE	50.07	26.75	12.38	9.28	0.89	3.24	2.22	3.82
F3 - LE	42.51	29.73	15.04	11.00	1.05	3.96	2.43	4.60
C3 - LE	42.38	25.12	17.69	12.98	1.08	5.07	3.11	4.80
P3 - LE	37.70	19.59	18.70	21.63	1.36	8.12	5.60	7.91
O1 - LE	20.61	11.61	20.12	34.11	7.19	6.73	7.09	20.29
F7 - LE	53.22	24.26	11.40	9.53	0.93	3.48	2.28	3.77
T3 - LE	54.38	22.81	9.69	11.12	1.15	4.06	2.96	4.09
T5 - LE	39.87	20.17	15.59	20.44	2.15	6.34	5.14	8.96

Intrahemispheric: RIGHT

	DELTA	THETA	ALPHA	BETA	HIGH	BETA 1	BETA 2	BETA 3
FP2 - LE	50.78	26.37	11.91	9.41	0.90	3.37	2.29	3.76
F4 - LE	41.84	29.86	14.61	11.81	1.13	4.10	2.89	4.82
C4 - LE	40.85	24.97	17.83	14.13	1.27	5.16	3.53	5.45
P4 - LE	26.79	15.24	33.32	21.86	1.50	7.02	4.52	10.32
O2 - LE	17.89	8.96	21.91	36.19	7.12	7.03	6.05	23.10
F8 - LE	53.52	24.11	10.66	10.02	1.01	3.35	2.55	4.12
T4 - LE	40.64	13.78	7.23	30.82	4.69	3.99	5.22	21.62
T6 - LE	38.78	13.67	19.29	22.33	3.11	6.41	4.38	11.55

Intrahemispheric: CENTER

	DELTA	THETA	ALPHA	BETA	HIGH	BETA 1	BETA 2	BETA 3
Fz - LE	42.34	31.41	14.41	10.20	0.99	3.60	2.34	4.27
Cz - LE	39.78	24.75	21.67	12.07	0.99	4.76	2.82	4.49
Pz - LE	39.15	21.15	20.29	17.18	1.23	6.72	4.25	6.21

Z Scored FFT Relative Power

Intrahemispheric: LEFT

	DELTA	THETA	ALPHA	BETA	HIGH	BETA 1	BETA 2	BETA 3
FP1 - LE	0.66	1.15	-0.60	-1.18	-1.31	-0.77	-1.12	-0.91
F3 - LE	0.51	0.92	-0.43	-0.56	-0.17	-0.34	-0.78	-0.18
C3 - LE	0.95	0.19	-0.56	-0.07	-0.14	0.09	-0.11	-0.02
P3 - LE	0.74	-0.07	-0.81	1.25	0.90	0.86	1.15	1.65
O1 - LE	0.06	-0.20	-1.07	1.84	1.80	0.53	1.84	2.08
F7 - LE	1.25	0.61	-0.96	-1.45	-1.35	-0.85	-1.28	-1.32
T3 - LE	1.76	0.39	-1.35	-1.23	-1.03	-1.02	-0.85	-1.00
T5 - LE	0.98	0.27	-1.10	0.80	0.72	0.15	0.86	1.27

Intrahemispheric: RIGHT

	DELTA	THETA	ALPHA	BETA	HIGH	BETA 1	BETA 2	BETA 3
FP2 - LE	0.72	1.07	-0.67	-1.25	-1.56	-0.75	-1.08	-1.07
F4 - LE	0.48	1.00	-0.54	-0.40	-0.24	-0.34	-0.42	-0.10
C4 - LE	0.87	0.20	-0.54	0.17	0.26	0.13	0.13	0.39
P4 - LE	-0.23	-0.84	0.30	1.48	1.08	0.72	0.80	2.45
O2 - LE	-0.25	-0.74	-0.89	2.14	2.07	0.83	1.58	2.45
F8 - LE	1.59	0.62	-1.22	-1.56	-1.07	-1.18	-1.28	-1.21
T4 - LE	1.16	-1.00	-1.87	1.00	0.72	-0.88	0.31	1.50
T6 - LE	1.01	-0.61	-0.89	1.20	1.66	0.30	0.72	2.03

Intrahemispheric: CENTER

	DELTA	THETA	ALPHA	BETA	HIGH	BETA 1	BETA 2	BETA 3
Fz - LE	0.52	0.94	-0.52	-0.61	0.07	-0.60	-0.77	-0.06
Cz - LE	0.50	-0.35	0.13	0.20	0.06	0.30	-0.01	0.32
Pz - LE	0.74	0.01	-0.58	1.08	0.99	0.79	0.86	1.41

FFT Power Ratio

Intrahemispheric: LEFT

	D/T	D/A	D/B	D/G	T/A	T/B	T/G	A/B	A/G	B/G
FP1 - LE	1.87	4.05	5.40	56.06	2.16	2.88	29.96	1.33	13.86	10.39
F3 - LE	1.43	2.83	3.86	40.61	1.98	2.70	28.40	1.37	14.37	10.51
C3 - LE	1.69	2.40	3.27	39.41	1.42	1.94	23.36	1.36	16.45	12.07
P3 - LE	1.92	2.02	1.74	27.79	1.05	0.91	14.44	0.86	13.79	15.95
O1 - LE	1.78	1.02	0.60	2.87	0.58	0.34	1.61	0.59	2.80	4.74
F7 - LE	2.19	4.67	5.58	57.25	2.13	2.54	26.09	1.20	12.26	10.25
T3 - LE	2.38	5.61	4.89	47.48	2.35	2.05	19.92	0.87	8.46	9.71
T5 - LE	1.98	2.56	1.95	18.58	1.29	0.99	9.40	0.76	7.26	9.52

Intrahemispheric: RIGHT

	D/T	D/A	D/B	D/G	T/A	T/B	T/G	A/B	A/G	B/G
FP2 - LE	1.93	4.26	5.39	56.68	2.21	2.80	29.44	1.27	13.30	10.51
F4 - LE	1.40	2.86	3.54	37.02	2.04	2.53	26.41	1.24	12.93	10.45
C4 - LE	1.64	2.29	2.89	32.23	1.40	1.77	19.70	1.26	14.07	11.15
P4 - LE	1.76	0.80	1.23	17.81	0.46	0.70	10.13	1.52	22.15	14.53
O2 - LE	2.00	0.82	0.49	2.51	0.41	0.25	1.26	0.61	3.08	5.09
F8 - LE	2.22	5.02	5.34	53.25	2.26	2.41	23.99	1.06	10.60	9.97
T4 - LE	2.95	5.62	1.32	8.66	1.90	0.45	2.94	0.23	1.54	6.57
T6 - LE	2.84	2.01	1.74	12.48	0.71	0.61	4.40	0.86	6.21	7.19

Intrahemispheric: CENTER

	D/T	D/A	D/B	D/G	T/A	T/B	T/G	A/B	A/G	B/G
Fz - LE	1.35	2.94	4.15	42.78	2.18	3.08	31.73	1.41	14.56	10.31
Cz - LE	1.61	1.84	3.30	40.18	1.14	2.05	25.00	1.79	21.88	12.19
Pz - LE	1.85	1.93	2.28	31.89	1.04	1.23	17.24	1.18	16.53	14.00

Z Scored FFT Power Ratio

Intrahemispheric: LEFT

	D/T	D/A	D/B	D/G	T/A	T/B	T/G	A/B	A/G	B/G
FP1 - LE	-0.25	0.65	1.09	1.43	0.99	1.40	1.52	0.11	0.52	0.67
F3 - LE	-0.18	0.48	0.61	0.37	0.67	0.82	0.49	-0.04	-0.17	-0.18
C3 - LE	0.73	0.74	0.55	0.61	0.48	0.14	0.20	-0.43	-0.26	0.09
P3 - LE	0.89	0.82	-0.48	-0.35	0.50	-0.87	-0.75	-1.36	-1.05	0.20
O1 - LE	0.29	0.66	-1.33	-1.71	0.55	-1.34	-1.70	-1.68	-1.71	-1.31
F7 - LE	0.59	1.12	1.52	1.59	1.05	1.39	1.37	0.03	0.41	0.66
T3 - LE	1.44	1.85	1.59	1.40	1.29	0.92	0.92	-0.12	0.20	0.55
T5 - LE	0.73	1.10	0.07	-0.18	0.86	-0.37	-0.49	-1.22	-1.02	-0.32

Intrahemispheric: RIGHT

	D/T	D/A	D/B	D/G	T/A	T/B	T/G	A/B	A/G	B/G
FP2 - LE	-0.22	0.70	1.14	1.72	1.07	1.42	1.71	0.11	0.59	0.79
F4 - LE	-0.26	0.55	0.50	0.44	0.80	0.72	0.57	-0.21	-0.18	-0.04
C4 - LE	0.65	0.69	0.34	0.14	0.48	-0.02	-0.15	-0.53	-0.48	-0.15
P4 - LE	0.58	-0.28	-1.31	-1.28	-0.56	-1.45	-1.37	-0.57	-0.45	0.01
O2 - LE	0.65	0.38	-1.77	-2.17	0.13	-1.94	-2.26	-1.73	-1.80	-1.38
F8 - LE	0.90	1.47	1.79	1.45	1.27	1.31	1.10	-0.07	0.21	0.42
T4 - LE	2.67	1.95	-0.14	-0.27	1.07	-1.09	-0.86	-1.74	-1.29	-0.31
T6 - LE	1.73	0.99	-0.25	-1.06	0.27	-1.18	-1.75	-1.24	-1.49	-1.14

Intrahemispheric: CENTER

	D/T	D/A	D/B	D/G	T/A	T/B	T/G	A/B	A/G	B/G
Fz - LE	-0.18	0.54	0.66	0.22	0.75	0.88	0.34	-0.08	-0.43	-0.50
Cz - LE	0.61	0.11	0.12	0.22	-0.24	-0.29	-0.20	-0.03	0.05	0.11
Pz - LE	0.66	0.66	-0.29	-0.42	0.43	-0.71	-0.78	-1.08	-0.94	-0.11

Peak Frequency (Hz)

Intrahemispheric: LEFT

	DELTA	THETA	ALPHA	BETA	HIGH	BETA 1	BETA 2	BETA 3
FP1 - LE	1.99	5.52	9.56	16.98	26.89	13.13	16.18	20.71
F3 - LE	2.11	5.44	9.70	16.93	26.79	13.04	16.21	20.66
C3 - LE	2.05	5.43	9.84	16.59	26.80	13.05	16.26	20.54
P3 - LE	2.04	5.47	10.01	16.55	26.84	13.06	16.27	20.32
O1 - LE	2.08	5.49	9.98	18.36	27.04	13.12	16.38	20.79
F7 - LE	1.93	5.46	9.59	16.88	26.86	13.10	16.16	20.80
T3 - LE	1.98	5.40	9.65	16.73	26.86	13.14	16.15	20.72
T5 - LE	2.06	5.41	9.97	17.20	26.96	13.10	16.25	20.65

Intrahemispheric: RIGHT

	DELTA	THETA	ALPHA	BETA	HIGH	BETA 1	BETA 2	BETA 3
FP2 - LE	2.01	5.53	9.57	16.89	26.86	13.14	16.22	20.65
F4 - LE	2.11	5.45	9.68	16.94	26.82	13.12	16.21	20.63
C4 - LE	2.06	5.43	9.86	16.76	26.86	13.11	16.23	20.56
P4 - LE	2.08	5.46	10.18	17.26	26.89	13.05	16.22	20.58
O2 - LE	2.03	5.56	10.08	18.72	27.12	13.08	16.37	21.05
F8 - LE	1.99	5.43	9.59	17.04	26.86	13.19	16.17	20.70
T4 - LE	1.95	5.33	9.78	19.31	26.66	13.35	16.41	21.11
T6 - LE	1.96	5.48	10.05	17.71	26.98	13.06	16.25	20.84

Intrahemispheric: CENTER

	DELTA	THETA	ALPHA	BETA	HIGH	BETA 1	BETA 2	BETA 3
Fz - LE	2.14	5.43	9.65	16.96	26.80	13.09	16.21	20.65
Cz - LE	2.07	5.42	9.93	16.57	26.83	13.04	16.22	20.54
Pz - LE	2.03	5.45	9.96	16.48	26.84	13.04	16.26	20.36

Z Scored Peak Frequency

Intrahemispheric: LEFT

	DELTA	THETA	ALPHA	BETA	HIGH	BETA 1	BETA 2	BETA 3
FP1 - LE	-0.60	-0.54	0.13	-0.19	0.28	-0.10	-0.04	-1.07
F3 - LE	-0.29	-1.26	0.73	0.10	0.31	-0.99	0.34	-0.27
C3 - LE	-1.22	-1.22	0.63	-0.19	0.22	-0.20	0.82	-0.73
P3 - LE	-0.73	-1.06	0.95	0.39	0.35	0.04	0.98	-0.93
O1 - LE	-0.15	-1.26	0.51	1.57	1.79	0.78	1.77	0.18
F7 - LE	-1.45	-0.82	0.15	-0.48	0.50	-0.42	-0.39	-0.77
T3 - LE	-1.86	-0.84	0.11	-0.45	0.14	0.09	-0.48	-0.70
T5 - LE	-0.53	-1.23	0.82	0.90	1.40	0.35	0.78	-0.31

Intrahemispheric: RIGHT

	DELTA	THETA	ALPHA	BETA	HIGH	BETA 1	BETA 2	BETA 3
FP2 - LE	-0.27	-0.47	0.18	-0.36	0.19	0.11	0.23	-1.35
F4 - LE	-0.56	-1.15	0.63	0.14	-0.04	-0.28	0.33	-0.56
C4 - LE	-1.33	-1.31	0.72	0.12	0.79	0.06	0.58	-0.48
P4 - LE	-0.47	-1.10	1.31	1.33	0.70	0.04	0.52	0.05
O2 - LE	-0.69	-1.02	0.77	1.94	2.00	0.49	1.34	0.92
F8 - LE	-1.13	-1.17	0.24	-0.19	0.28	0.36	-0.34	-1.07
T4 - LE	-2.56	-1.70	0.60	1.80	-1.03	1.43	1.72	0.73
T6 - LE	-1.98	-1.10	0.99	1.72	1.31	0.08	0.79	0.63

Intrahemispheric: CENTER

	DELTA	THETA	ALPHA	BETA	HIGH	BETA 1	BETA 2	BETA 3
Fz - LE	-0.12	-1.24	0.52	0.46	0.25	-0.59	0.52	-0.09
Cz - LE	-1.06	-1.22	1.35	-0.13	0.36	-0.51	0.43	-0.54
Pz - LE	-0.73	-1.21	0.87	0.39	0.34	-0.05	0.76	-0.57

FFT Amplitude Asymmetry

Intrahemispheric: LEFT

	DELTA	THETA	ALPHA	BETA
FP1 F3	19.07	-7.80	-16.70	-14.22
FP1 C3	16.14	5.78	-35.81	-33.74
FP1 P3	25.35	28.09	-43.45	-82.33
FP1 O1	99.11	95.12	-28.47	-100.28
FP1 F7	5.54	21.37	19.80	8.95
FP1 T3	50.77	72.65	79.92	41.49
FP1 T5	75.66	80.27	33.42	-22.05
F3 C3	-2.95	13.57	-19.39	-19.75
F3 P3	6.36	35.70	-27.24	-70.17
F3 O1	84.02	101.05	-11.90	-89.24
F3 F7	-13.56	29.05	36.21	23.10
F3 T3	32.49	79.32	93.50	54.90
F3 T5	58.71	86.72	49.44	-7.89
C3 P3	9.31	22.40	-7.95	-52.22
C3 O1	86.43	90.59	7.53	-72.69
C3 F7	-10.62	15.63	54.64	42.37
C3 T3	35.36	67.58	108.00	72.69
C3 T5	61.39	75.37	67.22	11.91
P3 O1	78.71	71.83	15.46	-22.61
P3 F7	-19.88	-6.83	61.92	89.63
P3 T3	26.27	46.95	113.51	114.08
P3 T5	52.84	55.30	74.18	63.15
O1 F7	-94.88	-77.70	47.60	106.83
O1 T3	-55.30	-27.17	102.55	128.41
O1 T5	-28.87	-18.35	60.45	82.80
F7 T3	45.55	53.35	62.59	32.85
F7 T5	70.86	61.54	13.85	-30.85
T3 T5	27.53	8.93	-49.82	-62.12

Intrahemispheric: RIGHT

	DELTA	THETA	ALPHA	BETA
FP2 F4	30.81	-0.71	-8.71	-10.99
FP2 C4	34.11	18.10	-27.46	-27.79
FP2 P4	39.85	31.06	-111.89	-98.46
FP2 O2	99.15	101.82	-55.06	-114.51
FP2 F8	21.90	35.82	37.93	20.90
FP2 T4	53.29	90.26	77.87	-81.30
FP2 T6	64.98	97.21	-7.71	-45.15
F4 C4	3.38	18.80	-18.86	-16.94
F4 P4	9.32	31.75	-105.75	-89.90
F4 O2	73.98	102.34	-46.91	-106.89
F4 F8	-9.07	36.50	46.26	31.71
F4 T4	23.43	90.82	85.14	-71.92
F4 T6	35.97	97.75	1.01	-34.59
C4 P4	5.94	13.15	-91.45	-75.85
C4 O2	71.04	87.76	-28.68	-94.22
C4 F8	-12.44	18.01	63.73	48.00
C4 T4	20.09	75.23	99.99	-56.71
C4 T6	32.68	82.75	19.86	-17.91
P4 O2	65.80	76.84	67.17	-22.36
P4 F8	-18.35	4.89	135.45	113.52
P4 T4	14.19	63.66	155.82	21.45
P4 T6	26.87	71.55	106.48	59.97
O2 F8	-81.68	-72.63	88.37	127.77
O2 T4	-52.84	-15.02	120.06	43.29
O2 T6	-40.72	-6.13	47.86	79.66
F8 T4	32.33	59.23	43.13	-98.04
F8 T6	44.67	67.25	-45.30	-64.53
T4 T6	12.80	8.91	-84.31	39.81

Interhemispheric: HOMOLOGOUS PAIRS

	DELTA	THETA	ALPHA	BETA
FP1 FP2	-0.99	1.85	4.25	-1.01
C3 C4	17.24	14.20	12.79	5.08
O1 O2	-0.95	10.69	-23.50	-20.96
T3 T4	1.71	22.89	1.83	-113.93

	DELTA	THETA	ALPHA	BETA
F3 F4	10.93	8.95	12.26	2.24
P3 P4	13.89	4.89	-74.28	-21.21
F7 F8	15.42	16.57	22.67	11.01
T5 T6	-13.16	22.87	-36.78	-24.68

Z Scored FFT Amplitude Asymmetry

Intrahemispheric: LEFT

	DELTA	THETA	ALPHA	BETA
FP1 F3	1.14	1.58	1.17	0.58
FP1 C3	0.74	1.88	0.84	0.09
FP1 P3	1.24	2.33	1.59	-0.69
FP1 O1	2.21	2.64	2.44	-0.46
FP1 F7	-1.13	-0.45	-0.37	-0.46
FP1 T3	-0.36	1.01	1.54	0.81
FP1 T5	1.29	2.02	2.11	0.14
F3 C3	-0.89	0.79	0.30	-0.68
F3 P3	0.39	1.43	1.02	-1.39
F3 O1	1.75	1.94	1.73	-0.78
F3 F7	-2.24	-1.84	-1.55	-1.03
F3 T3	-1.80	-0.06	1.10	0.49
F3 T5	0.52	1.26	1.58	-0.26
C3 P3	1.17	1.43	1.00	-1.53
C3 O1	2.42	2.03	1.53	-0.59
C3 F7	-1.92	-2.35	-1.22	-0.48
C3 T3	-1.59	-0.59	0.91	0.69
C3 T5	1.11	1.04	1.42	0.10
P3 O1	2.17	1.65	1.10	0.27
P3 F7	-2.22	-3.00	-1.90	0.49
P3 T3	-2.43	-1.60	-0.17	1.13
P3 T5	0.27	0.08	0.88	1.56
O1 F7	-3.31	-3.65	-2.92	0.26
O1 T3	-4.03	-2.57	-1.07	0.92
O1 T5	-2.50	-2.04	-0.73	0.81
F7 T3	0.82	2.15	2.52	1.11
F7 T5	2.36	3.01	2.72	0.42
T3 T5	2.82	1.82	1.00	-0.71

Intrahemispheric: RIGHT

	DELTA	THETA	ALPHA	BETA
FP2 F4	1.30	1.67	1.47	0.45
FP2 C4	1.10	2.25	1.16	0.31
FP2 P4	1.48	2.69	-0.39	-1.54
FP2 O2	2.30	3.28	1.57	-1.03
FP2 F8	-0.52	0.51	1.00	0.41
FP2 T4	-0.06	1.99	1.78	-1.63
FP2 T6	1.10	2.70	1.82	-0.37
F4 C4	0.15	1.27	0.51	-0.13
F4 P4	0.56	1.49	-0.92	-2.20
F4 O2	1.62	2.21	1.00	-1.22
F4 F8	-2.53	-1.45	-0.42	-0.10
F4 T4	-1.81	0.90	1.00	-1.51
F4 T6	0.27	1.81	1.09	-0.71
C4 P4	0.57	0.57	-1.39	-2.37
C4 O2	1.68	1.80	0.71	-1.25
C4 F8	-2.23	-2.77	-0.70	-0.00
C4 T4	-2.52	-0.20	0.72	-1.52
C4 T6	0.21	1.33	0.74	-0.72
P4 O2	1.87	2.22	1.95	0.24
P4 F8	-2.37	-2.80	0.69	1.46
P4 T4	-2.59	-0.64	1.28	-0.11
P4 T6	-0.30	1.54	2.91	2.09
O2 F8	-3.08	-3.50	-1.02	1.07
O2 T4	-3.37	-2.17	-0.34	-0.24
O2 T6	-2.66	-1.21	-0.30	1.08
F8 T4	0.63	2.94	1.74	-1.60
F8 T6	1.69	2.93	1.23	-0.56
T4 T6	1.87	1.78	0.06	1.11

Interhemispheric: HOMOLOGOUS PAIRS

	DELTA	THETA	ALPHA	BETA
FP1 FP2	0.32	0.42	0.61	0.52
C3 C4	1.22	1.20	0.78	0.84
O1 O2	0.33	0.90	-0.45	-0.56
T3 T4	0.47	0.90	0.49	-1.72

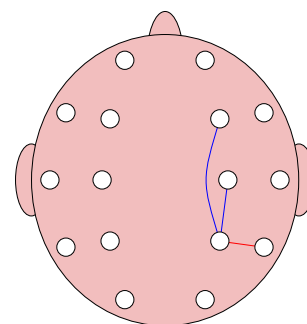
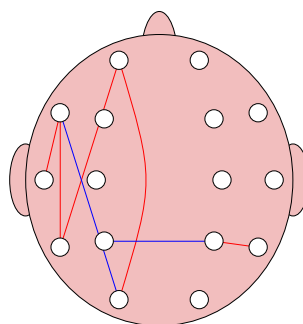
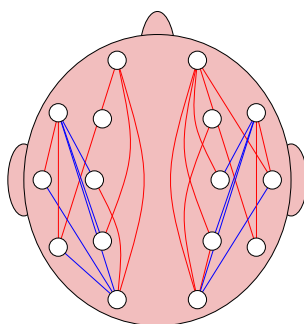
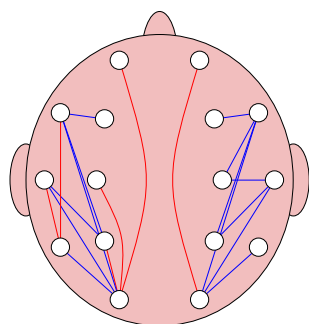
	DELTA	THETA	ALPHA	BETA
F3 F4	0.90	0.71	1.00	0.61
P3 P4	1.26	0.45	-2.49	-1.19
F7 F8	0.73	0.88	1.02	0.90
T5 T6	0.24	1.38	-0.18	-0.33

Delta (1.0 - 4.0 Hz)

Theta (4.0 - 8.0 Hz)

Alpha (8.0 - 12.0 Hz)

Beta (12.0 - 25.0 Hz)



- ———— +
Z-Score >= 1.96

- ———— +
Z-Score >= 2.58

- ———— +
Z-Score >= 3.09

FFT Coherence

Intrahemispheric: LEFT

	DELTA	THETA	ALPHA	BETA
FP1 F3	53.87	63.44	68.15	53.64
FP1 C3	22.38	32.92	30.67	16.68
FP1 P3	8.82	13.53	4.78	1.00
FP1 O1	1.92	1.65	2.60	1.06
FP1 F7	48.89	59.00	66.65	57.32
FP1 T3	19.87	18.24	25.21	13.21
FP1 T5	4.33	4.92	0.98	1.28
F3 C3	74.83	76.96	72.28	65.40
F3 P3	46.86	42.13	20.57	14.63
F3 O1	23.77	11.83	0.66	0.78
F3 F7	52.61	67.56	73.07	62.18
F3 T3	36.79	37.97	49.52	37.01
F3 T5	34.08	23.86	4.17	6.14
C3 P3	81.74	78.45	57.05	59.14
C3 O1	53.31	33.29	1.80	11.19
C3 F7	29.80	43.89	42.68	33.65
C3 T3	34.70	44.59	58.30	53.30
C3 T5	65.11	51.37	21.24	33.23
P3 O1	78.71	61.98	29.67	37.63
P3 F7	16.77	20.80	11.37	7.56
P3 T3	29.54	36.02	40.04	35.90
P3 T5	81.98	75.27	67.20	68.58
O1 F7	6.53	3.47	1.71	0.66
O1 T3	17.04	13.55	2.36	8.69
O1 T5	79.33	69.48	57.11	55.17
F7 T3	30.59	44.42	51.36	42.29
F7 T5	13.24	14.21	2.47	3.65
T3 T5	29.95	43.04	27.31	34.18

Intrahemispheric: RIGHT

	DELTA	THETA	ALPHA	BETA
FP2 F4	45.21	62.44	62.81	50.71
FP2 C4	18.49	30.65	18.82	15.16
FP2 P4	5.02	8.17	2.01	1.06
FP2 O2	0.66	0.85	1.89	0.29
FP2 F8	38.23	55.92	62.63	56.65
FP2 T4	7.66	12.66	6.55	3.01
FP2 T6	1.09	0.64	4.27	1.08
F4 C4	77.64	74.90	60.60	60.19
F4 P4	38.09	30.30	1.41	7.08
F4 O2	14.51	8.04	0.29	1.94
F4 F8	42.65	61.55	71.95	65.60
F4 T4	21.79	32.05	25.76	7.03
F4 T6	13.41	9.25	0.35	2.58
C4 P4	72.17	67.09	37.03	50.43
C4 O2	35.37	26.78	8.13	15.84
C4 F8	23.93	35.50	36.25	35.17
C4 T4	22.53	40.77	51.95	14.23
C4 T6	30.63	29.98	17.48	26.81
P4 O2	54.44	51.59	39.91	37.51
P4 F8	7.44	10.60	1.24	5.42
P4 T4	13.98	28.85	38.07	14.13
P4 T6	45.19	57.12	72.28	64.38
O2 F8	1.18	0.76	0.20	1.44
O2 T4	5.62	8.38	13.44	5.69
O2 T6	41.18	61.22	65.23	65.10
F8 T4	19.85	39.18	27.59	7.57
F8 T6	2.62	2.82	0.08	2.41
T4 T6	9.46	22.99	32.45	14.39

Interhemispheric: HOMOLOGOUS PAIRS

	DELTA	THETA	ALPHA	BETA
FP1 FP2	67.00	77.60	81.59	74.04
C3 C4	73.06	63.14	51.91	43.76
O1 O2	63.31	59.13	31.81	19.68
T3 T4	1.14	1.20	0.16	0.15

	DELTA	THETA	ALPHA	BETA
F3 F4	74.57	68.34	71.86	60.11
P3 P4	62.27	44.58	14.64	17.20
F7 F8	7.93	9.58	22.26	11.79
T5 T6	20.17	13.38	8.15	8.81

Z Scored FFT Coherence

Intrahemispheric: LEFT

	DELTA	THETA	ALPHA	BETA
FP1 F3	-0.06	0.14	-0.28	0.25
FP1 C3	-0.11	0.85	0.04	-0.39
FP1 P3	0.57	1.08	-0.34	-1.14
FP1 O1	0.27	0.18	-0.73	0.25
FP1 F7	-0.40	0.07	-0.09	0.57
FP1 T3	0.87	0.74	0.59	0.97
FP1 T5	0.95	1.34	-1.14	-0.05
F3 C3	1.09	1.48	0.82	0.88
F3 P3	1.71	1.54	0.45	0.13
F3 O1	3.13	1.79	-1.24	-0.39
F3 F7	-0.22	0.83	0.28	1.07
F3 T3	0.28	0.59	0.99	1.55
F3 T5	2.19	1.68	-0.62	0.77
C3 P3	1.59	1.49	0.45	0.87
C3 O1	1.94	1.35	-1.27	0.47
C3 F7	-0.05	0.89	0.08	0.65
C3 T3	-0.93	-0.14	0.15	1.28
C3 T5	1.59	1.29	0.02	1.08
P3 O1	1.11	0.52	-1.24	-0.47
P3 F7	1.49	1.52	0.17	0.37
P3 T3	-0.17	0.21	0.31	1.03
P3 T5	1.28	1.12	0.28	1.03
O1 F7	1.89	0.92	-0.95	-0.36
O1 T3	1.03	0.72	-0.90	0.64
O1 T5	1.42	1.04	-0.20	0.47
F7 T3	-0.91	0.24	0.43	1.17
F7 T5	1.48	1.53	-0.84	0.36
T3 T5	-0.27	0.41	-0.17	0.74

Intrahemispheric: RIGHT

	DELTA	THETA	ALPHA	BETA
FP2 F4	-1.23	0.00	-0.85	0.02
FP2 C4	-0.78	0.48	-0.99	-0.43
FP2 P4	-0.50	-0.18	-1.15	-1.05
FP2 O2	-0.69	-0.57	-0.81	-0.87
FP2 F8	-2.18	-0.64	-0.70	0.45
FP2 T4	-1.34	-0.71	-1.44	-1.01
FP2 T6	-0.75	-1.00	-0.25	-0.37
F4 C4	1.47	1.31	0.08	0.54
F4 P4	0.87	0.17	-2.20	-1.15
F4 O2	1.13	0.37	-1.20	0.13
F4 F8	-1.78	0.09	0.05	0.83
F4 T4	-1.68	-0.27	-0.57	-1.02
F4 T6	0.21	-0.16	-1.36	-0.42
C4 P4	0.32	-0.18	-1.20	-0.27
C4 O2	0.79	0.60	-0.31	0.70
C4 F8	-1.23	-0.26	-0.70	0.46
C4 T4	-3.01	-1.43	-0.13	-0.96
C4 T6	-0.28	-0.12	-0.26	0.35
P4 O2	-0.28	-0.02	-0.43	-0.33
P4 F8	-0.43	-0.44	-1.70	-0.48
P4 T4	-2.39	-1.00	-0.04	-0.75
P4 T6	-2.37	-0.37	0.74	0.60
O2 F8	-0.45	-0.84	-1.27	-0.04
O2 T4	-0.73	-0.32	0.41	-0.02
O2 T6	-2.13	0.33	0.32	0.95
F8 T4	-1.76	-0.54	-1.18	-1.36
F8 T6	-0.70	-0.79	-1.52	-0.44
T4 T6	-2.31	-1.04	-0.13	-0.86

Interhemispheric: HOMOLOGOUS PAIRS

	DELTA	THETA	ALPHA	BETA
FP1 FP2	-0.91	0.49	0.28	1.15
C3 C4	1.53	1.14	0.98	1.13
O1 O2	-0.05	0.29	-0.65	-1.29
T3 T4	-1.23	-0.65	-1.36	-1.05

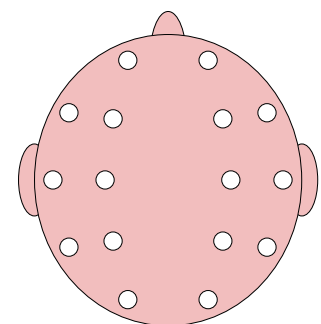
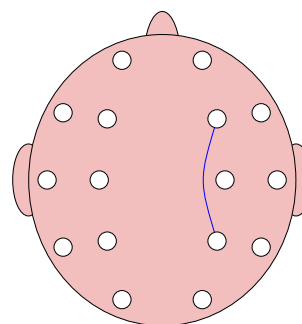
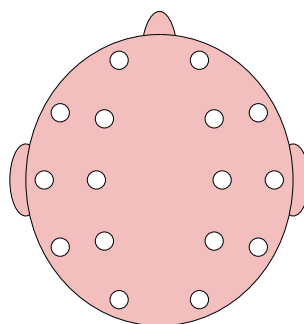
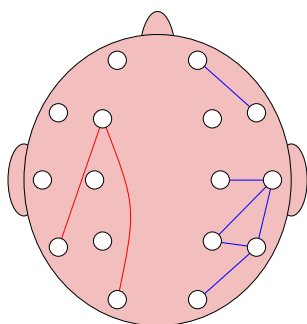
	DELTA	THETA	ALPHA	BETA
F3 F4	1.08	0.62	0.38	1.13
P3 P4	0.11	-0.52	-1.44	-1.91
F7 F8	-0.84	-0.40	-0.09	0.66
T5 T6	-0.03	0.44	0.08	0.90

Delta (1.0 - 4.0 Hz)

Theta (4.0 - 8.0 Hz)

Alpha (8.0 - 12.0 Hz)

Beta (12.0 - 25.0 Hz)



- ———— +
Z-Score >= 1.96

- ———— +
Z-Score >= 2.58

- ———— +
Z-Score >= 3.09

FFT Phase Lag (Deg)

Intrahemispheric: LEFT

	DELTA	THETA	ALPHA	BETA
FP1 F3	2.96	3.29	0.01	0.22
FP1 C3	7.60	3.34	-1.91	-10.14
FP1 P3	10.87	4.05	-18.60	-54.79
FP1 O1	25.76	20.11	-168.29	-146.58
FP1 F7	-0.98	2.01	-1.80	-2.17
FP1 T3	-1.90	-0.74	-3.93	-7.57
FP1 T5	7.35	1.97	-100.88	-116.82
F3 C3	1.49	0.05	-0.27	-1.25
F3 P3	3.72	-1.60	-5.93	-1.47
F3 O1	7.21	0.84	-165.28	-5.23
F3 F7	-1.00	-1.65	-1.68	-2.38
F3 T3	-2.42	-7.85	-2.68	-2.87
F3 T5	0.46	-6.42	-30.40	-15.57
C3 P3	2.53	-1.17	-4.36	-1.63
C3 O1	5.10	0.90	-28.04	-5.80
C3 F7	-2.19	-1.29	2.05	6.22
C3 T3	-5.92	-8.49	-0.23	0.89
C3 T5	1.05	-4.96	-17.38	-6.86
P3 O1	0.92	1.58	-14.56	-3.14
P3 F7	-2.67	0.08	16.26	22.03
P3 T3	-6.29	-8.13	6.14	5.80
P3 T5	-2.21	-3.11	-7.10	-0.05
O1 F7	-3.27	-4.76	155.09	70.03
O1 T3	-6.44	-13.84	26.38	9.94
O1 T5	-2.43	-3.60	9.15	1.08
F7 T3	-0.68	-3.18	-3.27	-2.38
F7 T5	-3.34	-3.50	-43.44	-33.90
T3 T5	2.86	5.19	-8.58	-3.29

Intrahemispheric: RIGHT

	DELTA	THETA	ALPHA	BETA
FP2 F4	3.02	2.55	-1.57	-2.93
FP2 C4	4.59	-0.50	-11.95	-19.48
FP2 P4	5.01	-7.70	-147.60	-95.96
FP2 O2	29.62	4.12	170.41	-102.90
FP2 F8	1.50	1.22	-0.98	-3.31
FP2 T4	-7.89	-13.22	-13.28	-23.04
FP2 T6	33.61	-13.53	176.57	-129.87
F4 C4	2.24	-0.50	-2.12	-1.66
F4 P4	4.10	-2.30	-13.65	-0.17
F4 O2	14.79	11.70	114.76	16.75
F4 F8	-2.31	-1.08	1.96	1.00
F4 T4	-5.65	-9.64	-0.91	-1.84
F4 T6	15.78	6.34	108.80	12.67
C4 P4	1.80	-1.45	-4.72	-2.32
C4 O2	6.72	7.27	-1.67	1.46
C4 F8	-3.81	2.34	10.14	11.69
C4 T4	-6.64	-7.83	2.70	1.68
C4 T6	7.86	3.83	3.76	2.84
P4 O2	0.35	4.60	-10.53	-1.21
P4 F8	-4.98	9.77	54.67	29.39
P4 T4	-9.68	-5.49	6.45	4.59
P4 T6	3.98	3.05	-2.97	1.75
O2 F8	-25.05	7.01	-177.24	28.59
O2 T4	-7.17	-9.72	8.47	3.21
O2 T6	6.42	-0.30	5.50	-0.64
F8 T4	-1.01	-4.86	-5.50	-11.96
F8 T6	20.04	-10.90	-153.00	-29.72
T4 T6	8.87	3.97	-3.32	-5.37

Interhemispheric: HOMOLOGOUS PAIRS

	DELTA	THETA	ALPHA	BETA
FP1 FP2	-0.48	-1.92	-2.10	-2.77
C3 C4	0.58	-0.01	-1.69	-1.27
O1 O2	-1.67	3.40	-5.72	0.02
T3 T4	-20.50	-167.65	-81.62	-0.48

	DELTA	THETA	ALPHA	BETA
F3 F4	-0.01	0.40	0.34	0.16
P3 P4	-0.51	0.82	-17.16	-1.34
F7 F8	-4.14	-2.10	-0.52	0.97
T5 T6	5.50	20.59	-7.19	8.23

Z Scored FFT Phase Lag

Intrahemispheric: LEFT

	DELTA	THETA	ALPHA	BETA
FP1 F3	-0.41	-0.40	-1.91	-2.51
FP1 C3	0.12	-0.49	-1.03	1.02
FP1 P3	-0.03	-0.76	-0.54	1.07
FP1 O1	-0.68	-0.71	0.58	0.48
FP1 F7	-0.93	-0.77	-0.49	-0.33
FP1 T3	-1.51	-2.60	-0.61	0.04
FP1 T5	-1.26	-1.89	0.24	0.76
F3 C3	-0.48	-2.22	-2.24	-1.05
F3 P3	-0.13	-1.20	-0.65	-1.36
F3 O1	-0.31	-2.36	0.70	-1.25
F3 F7	-0.79	-0.79	-0.51	-0.66
F3 T3	-0.90	0.42	-0.71	-0.56
F3 T5	-2.00	-0.35	-0.21	0.05
C3 P3	0.33	-0.84	-0.43	-0.92
C3 O1	0.01	-1.55	0.05	-0.48
C3 F7	-0.48	-0.93	-0.74	1.01
C3 T3	-0.05	0.43	-1.81	-1.45
C3 T5	-1.32	0.04	0.18	-0.22
P3 O1	-0.94	-0.70	0.58	0.07
P3 F7	-1.24	-2.89	-0.20	0.75
P3 T3	-0.35	0.03	-0.07	0.29
P3 T5	-0.04	0.20	0.43	-1.70
O1 F7	-1.86	-2.02	0.51	0.19
O1 T3	-0.79	-0.26	0.02	0.15
O1 T5	-0.20	0.06	0.19	-1.03
F7 T3	-1.56	-0.25	-0.27	-0.33
F7 T5	-1.27	-1.27	-0.02	0.29
T3 T5	-1.11	-0.27	0.03	-0.31

Intrahemispheric: RIGHT

	DELTA	THETA	ALPHA	BETA
FP2 F4	0.35	0.08	-0.43	-0.01
FP2 C4	0.13	-1.35	0.72	1.93
FP2 P4	-0.60	0.13	1.45	1.80
FP2 O2	-0.26	-1.36	0.51	0.40
FP2 F8	-0.36	-0.56	-0.77	0.38
FP2 T4	0.50	1.01	0.55	1.76
FP2 T6	0.26	-0.25	0.81	0.91
F4 C4	0.07	-1.53	-0.47	-0.69
F4 P4	0.17	-0.45	-0.09	-2.77
F4 O2	0.27	-0.17	0.39	-0.15
F4 F8	0.40	-1.00	-0.25	-1.13
F4 T4	0.56	1.03	-1.48	-0.58
F4 T6	0.74	-0.03	0.81	-0.07
C4 P4	0.07	-0.22	-0.16	-0.31
C4 O2	0.52	0.18	-1.83	-1.23
C4 F8	-0.12	-0.27	0.79	1.10
C4 T4	0.30	1.02	0.06	-0.75
C4 T6	0.78	-0.00	-0.94	-0.80
P4 O2	-1.58	0.48	0.42	-0.93
P4 F8	-0.54	0.62	0.96	1.49
P4 T4	0.35	0.55	-0.06	0.52
P4 T6	0.69	0.30	-0.64	-0.25
O2 F8	-0.20	-1.05	0.61	0.01
O2 T4	-0.77	-0.05	-0.96	-0.78
O2 T6	0.86	-1.76	-0.03	-1.29
F8 T4	-0.93	0.85	0.15	0.98
F8 T6	0.23	0.15	1.18	0.59
T4 T6	0.43	0.29	-0.89	0.41

Interhemispheric: HOMOLOGOUS PAIRS

	DELTA	THETA	ALPHA	BETA
FP1 FP2	-0.86	-0.22	-0.08	0.38
C3 C4	-1.32	-1.92	-0.92	-0.79
O1 O2	0.02	0.47	0.28	-1.73
T3 T4	0.60	1.45	0.63	-2.26

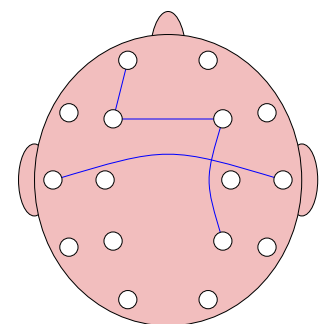
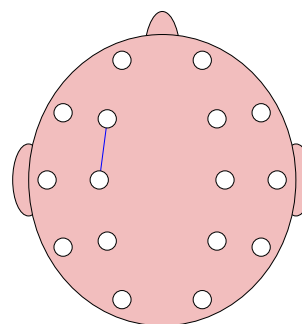
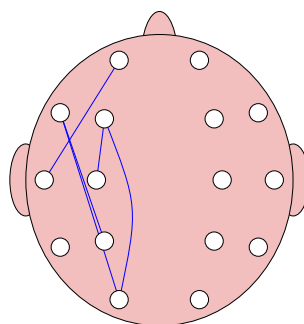
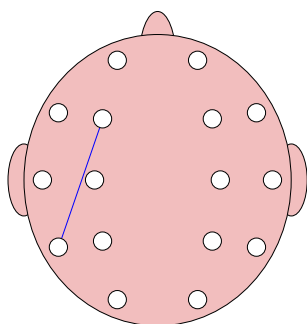
	DELTA	THETA	ALPHA	BETA
F3 F4	-1.78	-1.31	-1.57	-2.46
P3 P4	-0.79	-0.94	1.29	-0.51
F7 F8	-0.25	-0.97	-1.61	-1.17
T5 T6	0.13	0.81	-0.70	-0.25

Delta (1.0 - 4.0 Hz)

Theta (4.0 - 8.0 Hz)

Alpha (8.0 - 12.0 Hz)

Beta (12.0 - 25.0 Hz)



- ———— +
Z-Score >= 1.96

- ———— +
Z-Score >= 2.58

- ———— +
Z-Score >= 3.09